

**CHARACTERISTICS OF RECENT  
MIGRANTS**

AUSTRALIA

EMBARGO: 11.30AM (CANBERRA TIME) FRI 3 JUN 2011

**C O N T E N T S**

	<i>page</i>
Notes .....	2
Summary of findings .....	3

**TABLES**

List of tables .....	8
All persons aged 15 years and over .....	10
Recent migrants and temporary residents .....	12
Recent migrants .....	30
Table populations .....	41

**ADDITIONAL INFORMATION**

Explanatory notes .....	42
Technical note: Data quality .....	45
Glossary .....	48

**I N Q U I R I E S**

For further information about these and related statistics, contact the National Information and Referral Service on 1300 135 070.

# NOTES

## ABOUT THIS PUBLICATION

This publication presents information about the labour force status and other characteristics of 'recent migrants' and 'temporary residents'. For the purposes of this publication, recent migrants are defined as people who were born overseas, arrived in Australia after 2000, were aged 15 years and over on arrival, were not an Australian citizen or New Zealand citizen on arrival, do not hold New Zealand citizenship, and have permanent Australian resident status. Information is also included for temporary residents who planned to stay in Australia for 12 months or more. See the Glossary for more information.

## ABOUT THIS SURVEY

The 2010 Characteristics of Recent Migrants Survey was conducted as part of the Australian Bureau of Statistics' (ABS) Monthly Population Survey. The survey was previously conducted in 1984, 1987, 1990, 1993, 1996, 1999, 2004 and 2007. However, the survey changed significantly between 2004 and 2007. For example, prior to the 2007 survey, information had been collected from migrants who arrived in the 20 years prior to the survey's enumeration. Information in 2007 and 2010 was collected from migrants who arrived in the 10 years prior to the survey's enumeration. The name of the survey changed in 2010, from 'Labour Force Status and Other Characteristics of Recent Migrants' to 'Characteristics of Recent Migrants'.

Unless otherwise specified, differences between data items highlighted in the Summary of Findings are statistically significant. See Technical Note (paragraphs 9 to 10) for further details.

## ROUNDING

As estimates have been rounded, discrepancies may occur between sums of the component items and totals.



## ABBREVIATIONS

'000	thousand
ABS	Australian Bureau of Statistics
ABSCQ	Australian Bureau of Statistics Classification of Qualifications
ANZSCO	Australian and New Zealand Standard Classification of Occupations
ANZSIC	Australian and New Zealand Standard Industrial Classification
ASCED	Australian Standard Classification of Education
ASGC	Australian Standard Geographical Classification
CAI	computer assisted interviewing
DIAC	Australian Government Department of Immigration and Citizenship
LFS	Labour Force Survey (Australia)
MPS	Monthly Population Survey
n.f.d.	not further defined
NZ	New Zealand
RSE	relative standard error
SACC	Standard Australian Classification of Countries
SE	standard error

Brian Pink  
Australian Statistician

## SUMMARY OF FINDINGS

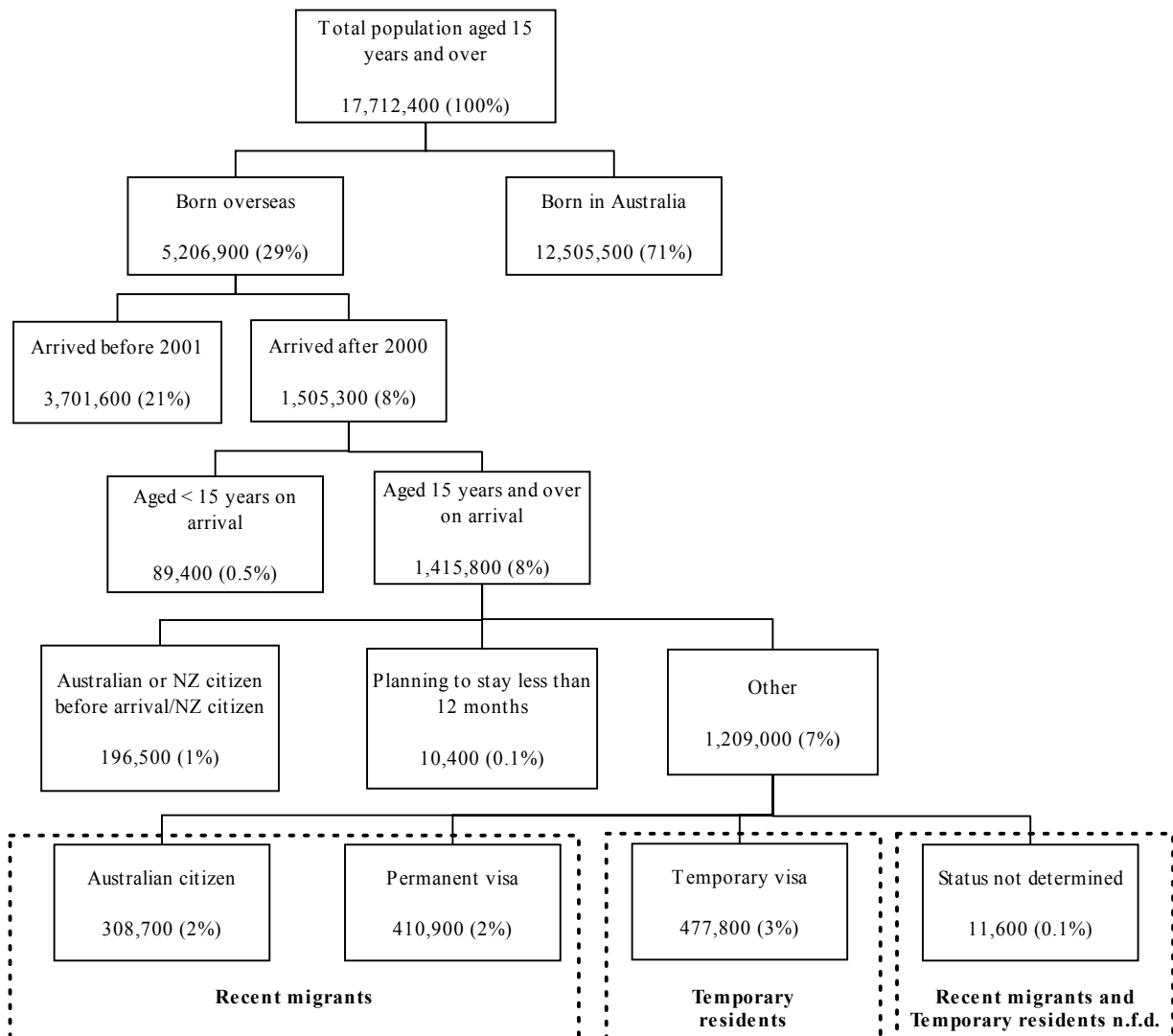
### OVERVIEW

In November 2010, the in scope Australian population aged 15 years and over was 17.7 million people. Of these people 5.2 million (29%) were born overseas (Table 1).

There were 1.4 million people who were born overseas, arrived in Australia after 2000, and were aged 15 years and over on arrival. This represents 8% of the total population aged 15 years and over. Of these, 196,500 were an Australian citizen or New Zealand citizen before arrival or currently hold New Zealand citizenship and 10,400 were planning to stay less than 12 months. The remaining 1.2 million people were recent migrants and temporary residents. Of these:

- 60% were recent migrants (permanent visa 410,900 and obtained Australian citizenship 308,700);
- 40% were temporary residents (temporary visa 477,800) (Table 1).

PERSONS AGED 15 YEARS AND OVER, Migration status as at November 2010



In November 2010 there were 719,600 recent migrants. The majority (76%) were born in other than main English-speaking countries and 91% were aged 15–44 years on arrival. There were also 477,800 temporary residents, of whom 80% were born in other than main English-speaking countries and 95% were aged 15–44 years on arrival (Table 3).

## SUMMARY OF FINDINGS *continued*

### OVERVIEW *continued*

Of the recent migrants and temporary residents, 79% were the main applicant on their visa application form when they first arrived in Australia (Table 5).

There were 239,000 people who had a temporary visa on arrival to live in Australia and had since obtained a permanent visa or Australian citizenship. Of these, 52% had obtained a permanent visa while the remaining 48% had obtained Australian citizenship by November 2010. Of those who were temporary residents on arrival and had obtained a permanent visa, 49% held a skilled visa and 32% held a family visa (Table 8).

### EMPLOYMENT

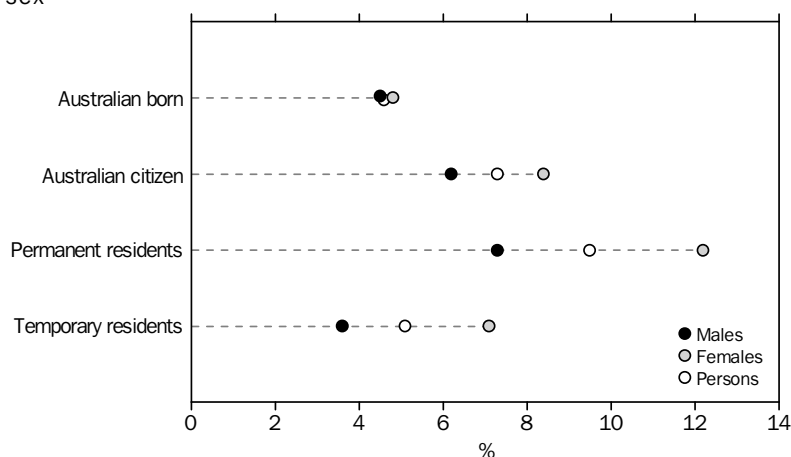
#### Overview

Migrants who had obtained Australian citizenship since arrival were more likely to be employed (73%) than other recent migrants (64%) or temporary residents (63%). Of those who were employed, 75% of recent migrants with a permanent visa and 77% of those with Australian citizenship were employed full time compared with 57% of temporary residents. In all cases males were more likely to be employed full time than females: 90% of male migrants with Australian citizenship were employed full time compared with 63% of females; 83% of males on a permanent visa were employed full time compared with 64% of females; and 62% of male temporary residents were employed full time compared with 50% of females. Temporary residents on student visas were less likely to be employed than other temporary residents (55% compared with 73%) (Table 2).

#### Unemployment rate

The unemployment rate for recent migrants and temporary residents combined was 7%, compared with 5% for people born in Australia. Migrants with Australian citizenship had an unemployment rate of 7%. Temporary residents had a lower unemployment rate (5%) than recent migrants on a permanent visa (9%) (Table 2).

#### UNEMPLOYMENT RATE, By residency type as at November 2010 and sex



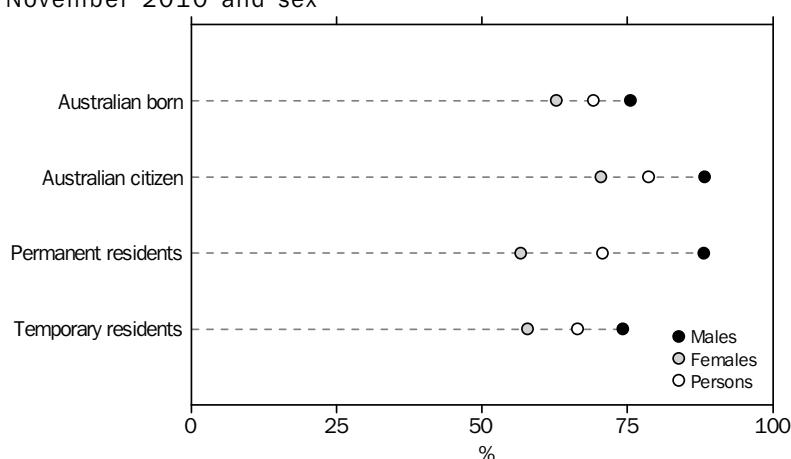
The unemployment rate for migrants born in main English-speaking countries was lower than for migrants born in other countries (5% compared with 8%). Also, migrants who had obtained a non-school qualification before arrival had a lower unemployment rate than those who had not (6% and 10% respectively) (Table 3).

## SUMMARY OF FINDINGS *continued*

### Labour force participation rate

Migrants who had obtained Australian citizenship since arrival had a higher labour force participation rate (79%) than other recent migrants (71%) and temporary residents (66%). In all cases, males had a higher labour force participation rate than females: 88% for male migrants with Australian citizenship compared with 70% for females; 88% for males on a permanent visa compared with 57% for females; and 74% for male temporary residents compared with 58% of females. For males and females born in Australia, the participation rate was 75% and 63% respectively (Table 2).

LABOUR FORCE PARTICIPATION RATE, By residency type as at November 2010 and sex



Labour force participation rates were higher for recent migrants and temporary residents born in main English-speaking countries (84%) than other countries (67%) and higher for those who had obtained a non-school qualification before arrival than for those who had not (78% and 59% respectively) (Table 3).

### Finding employment

Some 10% of recent migrants who have had a job in Australia arrived with their first job already arranged while 43% spent three months or less looking for their first job (Table 15).

An estimated 44% of recent migrants who have had a job since arrival received some form of help finding their first job. Of these people:

- 68% received help from family or friends;
- 25% from Centrelink or a Job Network agency;
- 7% from an educational institution;
- 6% from a migrant association or refugee settlement organisation;
- 3% from a church or community group (Table 14).

About one third (35%) of recent migrants reported experiencing some difficulty finding their first job in Australia. Of the migrants who experienced difficulty:

- 64% reported a lack of Australian work experience or references;
- 33% experienced language difficulties;
- 23% reported a lack of local contacts or networks;
- 15% said there were no jobs in their locality, line of work or at all;
- 15% had difficulty with their skills or qualifications not being recognised;
- 8% said they did not know how or where to apply for jobs;
- 7% had restrictions due to their visa type;

## SUMMARY OF FINDINGS *continued*

### *Finding employment continued*

- 7% had difficulties with transport or had no driver's licence (Table 14).

### *Skilled migrants*

An estimated 90% of migrants with a skilled visa at November 2010 who were the main applicant were in the labour force and 87% were currently employed. Of those who nominated an occupation for their current visa, 53% were currently employed in the same occupation group as the one they nominated (Table 17).

Some 88% of skilled migrants had obtained a non-school qualification before arrival and 61% of them had used their qualification in their current job. Of those who had not used their qualifications, 38% had tried to find work more suited to their qualifications (Table 17).

## EDUCATION

### *Recent migrants*

Almost two thirds (65%) of recent migrants obtained a non-school qualification before arrival in Australia. Of these, 67% had obtained a Bachelor degree or higher, 18% had obtained an Advanced diploma or Diploma and 12% a Certificate level qualification.

Almost one third (31%) of recent migrants had obtained a non-school qualification since arrival in Australia and of these, almost half (46%) had obtained a Bachelor degree or higher (Table 3).

Of the recent migrants who had obtained a non-school qualification before arrival in Australia and who had a job since arriving in Australia, 51% reported that they had used their highest non-school qualification in their first job in Australia. A further 23% had not used their highest non-school qualification in their first job but had tried to find work more suited to their qualifications (Table 15).

One third (33%) of recent migrants who had obtained a non-school qualification before arrival had their overseas qualifications recognised in Australia (Table 16).

### *Temporary residents*

Around 59% of temporary residents had obtained a non-school qualification before arrival in Australia. Of these, almost three quarters (72%) held a Bachelor degree or higher.

Almost one third (31%) of temporary residents had obtained a non-school qualification since arrival in Australia, with almost half (46%) of these completing a Bachelor degree or higher (Table 3).

## HOUSEHOLD INCOME

Wages and salary were the main source of household income for the majority of recent migrants (85%). The remainder sourced their main household income from Australian or overseas Government pensions or allowances (9%) or from other sources (5%).

Temporary residents were less likely to report wages and salary as their current main source of household income (77%) than recent migrants. 'Other' income sources were higher for temporary residents (14%) than for recent migrants (5%).

Migrants from main English-speaking countries were more likely than migrants from other countries to report wages and salaries as their main source of income (92% compared with 79%). Migrants from other countries reported a higher proportion for government pensions and allowances, 9% compared with 2%.

## SUMMARY OF FINDINGS *continued*

---

### HOUSEHOLD INCOME *continued*

The vast majority (92%) of migrants on a skilled visa reported wages and salary as their main source of household income while 57% of migrants on humanitarian visas reported government pension and allowances as their main source of household income (Table 10).

## LIST OF TABLES

page

### ALL PERSONS AGED 15 YEARS AND OVER

- 1** Migration status as at November 2010 and 2007–By sex . . . . . 10
- 2** Migration status and type of visa as at November 2010–By labour force status . . . . . 11

### RECENT MIGRANTS AND TEMPORARY RESIDENTS

- 3** Selected characteristics–By labour force status . . . . . 12
- 4** Selected characteristics–By country of birth . . . . . 15
- 5** Type of visa on arrival to live in Australia and applicant status–By labour force status . . . . . 19
- 6** Selected characteristics–By type of visa on arrival to live in Australia . . . . . 20
- 7** Selected characteristics–By type of visa as at November 2010 . . . . . 21
- 8** Type of visa as at November 2010–By type of visa on arrival to live in Australia . . . . . 22
- 9** Selected characteristics–By whether left job overseas when came to live in Australia . . . . . 23
- 10** Selected characteristics–By current main source of household income . . . . . 26

### WITHOUT A NON-SCHOOL QUALIFICATION ON ARRIVAL

- 11** Selected characteristics–By whether recent migrant or temporary resident . . . . . 28

### WHO ARE NOT IN THE LABOUR FORCE

- 12** Selected characteristics–By type of visa as at November 2010 . . . . . 29

### RECENT MIGRANTS

- 13** Selected characteristics–By whether occupation in main job overseas was same as occupation as at November 2010 . . . . . 30
- 14** Selected characteristics–By whether had a job or looked for a job since arriving in Australia . . . . . 32

### WHO HAVE HAD A JOB SINCE ARRIVAL

- 15** Selected characteristics of first job held in Australia–By whether obtained non-school qualification before arrival . . . . . 34

### WITH A NON-SCHOOL QUALIFICATION ON ARRIVAL

- 16** Selected characteristics–By level of highest non-school qualification obtained before arrival . . . . . 35

### MAIN APPLICANTS WITH PERMANENT SKILLED VISA AS AT NOVEMBER 2010

- 17** Selected characteristics–By sex . . . . . 38



**LIST OF TABLES** *continued*

---

*page*

RECENT MIGRANTS *continued*

BORN IN OTHER THAN MAIN ENGLISH-SPEAKING COUNTRIES

- 18** Selected characteristics—By proficiency in spoken English when first  
came to live in Australia . . . . . 39
- 19** Selected characteristics—By current proficiency in spoken English . . . . . 40

TABLE POPULATIONS

- 20** State or territory of usual residence . . . . . 41

	Males	Females	Persons	Proportion of all persons
	'000	'000	'000	%
2010				
<b>BORN IN AUSTRALIA<sup>(a)</sup></b>	6 213.6	6 291.9	12 505.5	70.6
<b>BORN OVERSEAS</b>	2 553.8	2 653.1	5 206.9	29.4
<b>Arrived before 2001</b>	1 816.6	1 885.0	3 701.6	20.9
<b>Arrived after 2000</b>	737.1	768.1	1 505.3	8.5
<b>Aged less than 15 years on arrival</b>	48.9	40.5	89.4	0.5
<b>Aged 15 years and over on arrival</b>	688.2	727.6	1 415.8	8.0
Recent migrants and temporary residents	580.5	628.4	1 209.0	6.8
Recent migrants	325.8	393.8	719.6	4.1
Australian citizen	142.7	165.9	308.7	1.7
Permanent	183.0	227.8	410.9	2.3
Skilled	94.3	89.7	184.0	1.0
Family	55.0	108.9	163.9	0.9
Humanitarian	*20.0	12.2	32.3	0.2
Other/n.f.d.	13.7	17.0	30.7	0.2
Temporary residents	249.0	228.8	477.8	2.7
Student	145.2	118.1	263.3	1.5
Other/n.f.d.	103.8	110.7	214.5	1.2
Status not determined	*5.8	*5.8	11.6	0.1
Australian/New Zealand citizen before arrival or currently holds New Zealand citizenship	103.1	93.4	196.5	1.1
Born in New Zealand	65.5	65.2	130.7	0.7
Not born in New Zealand	37.6	28.2	65.7	0.4
Planning to stay less than 12 months	*4.6	*5.8	*10.4	*0.1
<b>TOTAL</b>	<b>8 767.4</b>	<b>8 945.0</b>	<b>17 712.4</b>	<b>100.0</b>
2007				
<b>BORN IN AUSTRALIA<sup>(a)</sup></b>	5 726.4	5 893.9	11 620.3	70.8
<b>BORN OVERSEAS</b>	2 394.9	2 389.6	4 784.5	29.2
<b>Arrived before 1998</b>	1 799.9	1 775.4	3 575.3	21.8
<b>Arrived after 1997</b>	595.0	614.2	1 209.2	7.4
<b>Aged less than 15 years on arrival</b>	35.0	34.5	69.5	0.4
<b>Aged 15 years and over on arrival</b>	560.0	579.7	1 139.7	6.9
Recent migrants and temporary residents	457.4	482.0	939.4	5.7
Recent migrants	299.3	347.7	647.0	3.9
Australian citizen	135.1	143.0	278.1	1.7
Permanent	164.2	204.7	368.9	2.2
Skilled	102.2	86.4	188.6	1.1
Family	48.4	101.7	150.2	0.9
Humanitarian	10.0	*9.5	19.5	0.1
Other/n.f.d.	*3.6	*7.0	10.6	0.1
Temporary residents	154.6	130.4	285.1	1.7
Student	86.1	72.1	158.2	1.0
Other/n.f.d.	68.5	58.3	126.8	0.8
Status not determined	**3.4	*3.9	**7.3	**—
Australian/New Zealand citizen before arrival, currently holds New Zealand citizenship or born in New Zealand	96.2	94.2	190.4	1.2
Born in New Zealand	61.8	65.0	126.8	0.8
Not born in New Zealand	34.4	29.2	63.5	0.4
Planning to stay less than 12 months	*6.5	*3.5	*10.0	*0.1
<b>TOTAL</b>	<b>8 121.3</b>	<b>8 283.5</b>	<b>16 404.8</b>	<b>100.0</b>

\* estimate has a relative standard error of 25% to 50% and should be used with caution

\*\* estimate has a relative standard error greater than 50% and is considered too unreliable for general use

— nil or rounded to zero (including null cells)

(a) Includes External Territories.

ALL PERSONS AGED 15 YEARS AND OVER, Migration status and type of visa as at  
November 2010(a)—By labour force status

	EMPLOYED			Unem- ployed	Labour force	Not in the labour force	Total	Unem- ployment rate	Labour force partic- ipation rate
	Full time	Part time	Total						
	'000	'000	'000						
MALES									
Born in Australia(b)	3 786.3	695.4	4 481.7	209.2	4 690.9	1 522.7	6 213.6	4.5	75.5
Born overseas(c)	1 397.8	303.0	1 700.7	76.4	1 777.2	776.6	2 553.8	4.3	69.6
Recent migrants and temporary residents(d)	344.5	104.8	449.3	26.8	476.1	104.4	580.5	5.6	82.0
Australian citizen	106.2	*11.9	118.1	7.8	126.0	16.8	142.7	6.2	88.3
Permanent	124.9	24.6	149.6	11.8	161.3	21.7	183.0	7.3	88.1
Skilled	72.2	12.2	84.4	*3.5	87.9	*6.4	94.3	*4.0	93.2
Family	36.6	*7.9	44.5	*3.8	48.3	6.7	55.0	*7.8	87.7
Humanitarian	*4.8	**3.8	*8.6	*3.1	*11.7	*8.3	*20.0	*26.7	58.4
Other/n.f.d.	11.4	**0.7	12.1	**1.4	13.5	**0.2	13.7	*10.3	98.2
Temporary	110.3	67.8	178.1	*6.7	184.8	64.2	249.0	*3.6	74.2
Student	30.5	56.7	87.2	*3.9	91.1	54.1	145.2	*4.3	62.8
Other/n.f.d.	79.8	11.1	90.9	**2.8	93.7	10.1	103.8	**3.0	90.3
Total(d)	5 184.1	998.4	6 182.5	285.6	6 468.1	2 299.3	8 767.4	4.4	73.8
FEMALES									
Born in Australia(b)	1 989.6	1 768.4	3 758.0	189.9	3 947.9	2 344.0	6 291.9	4.8	62.7
Born overseas(c)	820.1	553.9	1 374.0	90.0	1 463.9	1 189.2	2 653.1	6.1	55.2
Recent migrants and temporary residents(d)	202.7	142.1	344.8	35.4	380.3	248.2	628.4	9.3	60.5
Australian citizen	67.7	39.2	107.0	*9.8	116.7	49.2	165.9	*8.4	70.4
Permanent	72.4	40.8	113.2	15.8	129.0	98.8	227.8	12.2	56.6
Skilled	31.1	18.7	49.7	*6.3	56.0	33.7	89.7	*11.2	62.4
Family	35.3	17.1	52.4	7.4	59.8	49.1	108.9	12.4	54.9
Humanitarian	**0.8	**0.7	**1.4	**0.5	*1.9	*10.3	12.2	**24.9	*15.8
Other/n.f.d.	*5.3	*4.4	9.7	**1.6	11.3	*5.7	17.0	**14.5	66.5
Temporary	61.5	61.6	123.1	9.4	132.5	96.3	228.8	7.1	57.9
Student	16.8	40.2	57.1	*4.9	61.9	56.2	118.1	*7.9	52.4
Other/n.f.d.	44.7	21.3	66.0	*4.5	70.5	40.2	110.7	*6.4	63.7
Total(d)	2 809.7	2 322.3	5 132.0	279.9	5 411.8	3 533.2	8 945.0	5.2	60.5
PERSONS									
Born in Australia(b)	5 775.9	2 463.8	8 239.7	399.1	8 638.8	3 866.7	12 505.5	4.6	69.1
Born overseas(c)	2 217.8	856.9	3 074.7	166.4	3 241.1	1 965.8	5 206.9	5.1	62.2
Recent migrants and temporary residents(d)	547.3	246.9	794.1	62.2	856.4	352.6	1 209.0	7.3	70.8
Australian citizen	174.0	51.1	225.1	17.6	242.7	66.0	308.7	7.3	78.6
Permanent	197.4	65.4	262.8	27.5	290.3	120.6	410.9	9.5	70.7
Skilled	103.2	30.9	134.1	*9.7	143.9	40.1	184.0	*6.8	78.2
Independent	48.2	12.5	60.7	*6.6	67.3	14.7	82.0	*9.8	82.0
Other/n.f.d.	55.0	18.4	73.4	*3.1	76.6	25.4	102.0	*4.1	75.1
Family	71.9	25.0	96.9	11.2	108.1	55.9	163.9	10.3	65.9
Humanitarian	*5.6	*4.5	*10.0	*3.6	*13.6	*18.6	32.3	*26.4	42.3
Other/n.f.d.	16.7	*5.1	21.7	**3.0	24.8	*5.9	30.7	*12.2	80.7
Temporary	171.8	129.4	301.2	16.1	317.3	160.5	477.8	5.1	66.4
Student	47.3	96.9	144.3	8.8	153.1	110.2	263.3	5.7	58.1
Other/n.f.d.	124.5	32.4	156.9	*7.4	164.2	50.3	214.5	*4.5	76.6
Total(d)	7 993.8	3 320.6	11 314.4	565.5	11 879.9	5 832.5	17 712.4	4.8	67.1

\* estimate has a relative standard error of 25% to 50% and should be used with caution

\*\* estimate has a relative standard error greater than 50% and is considered too unreliable for general use

(a) Refers to type of visa of main applicant. His/her spouse and dependants may also be included in that visa type.

(b) Includes External Territories.

(c) Includes persons who arrived before 2001, persons who arrived after 2000 who were aged less than 15 on arrival, persons who were Australian or New Zealand citizens before arrival, currently hold New Zealand citizenship, and persons who are planning to stay in Australia for less than 12 months.

(d) Includes type of visa 'Status not determined'.

	EMPLOYED						Not in the labour force	Unem- ployment rate	Labour force partic- ipation rate
	Full time	Part time	Total	Unem- ployed	Labour force	Total			
	'000	'000	'000	'000	'000	'000			
RECENT MIGRANTS									
Sex									
Males	231.2	36.5	267.7	19.6	287.3	38.5	325.8	6.8	88.2
Females	140.2	80.0	220.2	25.6	245.8	148.0	393.8	10.4	62.4
Age group on arrival (years)									
15–19	18.9	9.1	28.0	9.3	37.3	19.4	56.7	24.9	65.8
20–24	59.5	24.4	84.0	8.3	92.3	36.1	128.4	9.0	71.9
25–34	167.5	46.9	214.4	17.8	232.2	60.5	292.7	7.7	79.3
35–44	103.5	26.7	130.3	*7.8	138.1	35.6	173.7	5.6	79.5
45 and over	21.9	9.4	31.2	*1.9	33.2	34.9	68.0	*5.8	48.8
Year of arrival									
2001–2002	81.0	19.2	100.2	*4.2	104.4	27.1	131.5	*4.0	79.4
2003–2004	82.2	25.3	107.4	7.0	114.4	29.1	143.5	6.1	79.7
2005–2006	87.8	24.7	112.5	*10.4	122.9	47.0	169.8	8.4	72.4
2007	38.5	13.6	52.1	*7.6	59.7	18.9	78.6	*12.7	75.9
2008	43.2	17.2	60.4	*5.9	66.3	21.8	88.0	*8.8	75.3
2009	27.1	13.1	40.2	*4.9	45.0	26.4	71.5	*10.8	63.0
2010 to survey date	11.6	*3.4	15.0	*5.4	20.4	*16.2	36.6	*26.3	55.8
Relationship in household									
Family member	323.3	106.8	430.1	39.7	469.8	178.1	647.9	8.4	72.5
Husband, wife or partner	292.4	88.2	380.6	29.3	409.9	142.4	552.3	7.2	74.2
Lone parent	np	np	12.6	**1.3	13.9	9.8	23.7	**9.5	58.6
Dependent student	np	np	*5.2	**1.7	*6.9	11.8	18.7	**24.6	37.1
Other related individual(b)	22.6	9.1	31.7	*7.3	39.1	14.1	53.1	*18.7	73.5
Non-family member	46.9	*9.2	56.1	*5.2	61.3	*8.4	69.8	*8.5	87.9
Lone person	23.7	**1.5	25.2	*3.1	28.3	*4.9	33.2	*10.9	85.3
Not living alone	23.2	**7.7	30.9	**2.1	33.0	*3.5	36.5	**6.4	90.3
Country of birth									
Main English-speaking countries	108.1	30.2	138.3	*7.1	145.4	24.6	170.1	*4.9	85.5
Other than main English-speaking countries	262.5	86.3	348.8	37.9	386.7	161.4	548.1	9.8	70.6
Level of highest non-school qualification obtained before arrival									
Obtained a non-school qualification before arrival(c)	283.5	69.6	353.2	25.1	378.2	87.2	465.4	6.6	81.3
Bachelor degree or higher	184.8	48.6	233.4	19.8	253.2	60.4	313.6	7.8	80.7
Advanced diploma/Diploma	49.0	15.5	64.4	*2.4	66.8	15.1	81.9	*3.5	81.5
Certificate	41.0	*4.3	45.4	*2.0	47.4	*7.7	55.1	*4.3	86.0
Did not obtain a non-school qualification before arrival	87.8	46.9	134.7	20.1	154.8	99.3	254.1	13.0	60.9
Level of highest non-school qualification obtained since arrival									
Obtained a non-school qualification since arrival(c)	134.2	38.1	172.4	16.6	189.0	30.8	219.8	8.8	86.0
Bachelor degree or higher	69.6	12.8	82.5	*7.7	90.2	10.9	101.0	*8.5	89.3
Advanced diploma/Diploma	21.8	11.9	33.7	**1.3	34.9	*5.1	40.1	**3.6	87.2
Certificate	38.1	11.8	49.9	*6.6	56.5	14.9	71.3	*11.6	79.2
Has not obtained a non-school qualification since arrival	237.1	78.4	315.5	28.5	344.0	155.7	499.7	8.3	68.8
Total(d)	371.4	116.5	487.9	45.1	533.0	186.5	719.6	8.5	74.1

\* estimate has a relative standard error of 25% to 50% and should be used with caution

\*\* estimate has a relative standard error greater than 50% and is considered too unreliable for general use

np not available for publication but included in totals where applicable, unless otherwise indicated

(a) Includes 'Status not determined'.

(b) Includes 'Non-dependent child'.

(c) Includes 'Level not determined'.

(d) Includes country of birth 'Inadequately described' and relationship in household 'Relationship not determined'.

	EMPLOYED						Not in the labour force	Unem- ployment rate	Labour force partic- ipation rate
	Full time	Part time	Total	Unem- ployed	Labour force	Total			
	'000	'000	'000	'000	'000	'000			
TEMPORARY RESIDENTS									
Sex									
Males	110.3	67.8	178.1	*6.7	184.8	64.2	249.0	*3.6	74.2
Females	61.5	61.6	123.1	9.4	132.5	96.3	228.8	7.1	57.9
Age group on arrival (years)									
15–19	14.8	20.3	35.1	*3.0	38.1	37.5	75.6	*7.8	50.4
20–24	45.1	52.7	97.8	*5.2	102.9	54.9	157.8	*5.0	65.2
25–34	79.5	46.4	125.9	*5.1	131.0	47.3	178.3	*3.9	73.5
35–44	23.7	7.3	31.0	**1.8	32.8	11.2	44.1	**5.4	74.5
45 and over	8.7	*2.6	11.3	**1.1	12.4	9.5	21.9	**9.1	56.6
Year of arrival									
2001–2002	np	np	np	np	*13.1	*5.8	18.9	np	69.1
2003–2004	np	np	np	np	18.6	*8.7	27.3	np	68.1
2005–2006	38.2	17.1	55.3	*2.5	57.8	24.3	82.1	*4.3	70.4
2007	31.9	16.9	48.8	**1.8	50.5	25.0	75.5	**3.5	66.9
2008	32.3	35.6	67.9	*2.2	70.1	27.8	97.9	*3.1	71.6
2009	26.8	40.5	67.3	*5.2	72.5	39.5	112.0	*7.2	64.8
2010 to survey date	19.9	11.4	31.3	*3.4	34.7	29.5	64.2	*9.8	54.1
Relationship in household									
Family member	122.7	68.8	191.5	*8.9	200.4	88.3	288.7	*4.4	69.4
Husband, wife or partner	111.4	53.3	164.7	*7.6	172.4	70.2	242.6	*4.4	71.1
Lone parent	np	np	*2.6	—	*2.6	**1.5	*4.1	—	*63.9
Dependent student	np	np	np	np	*2.3	*2.8	*5.1	np	*45.3
Other related individual(b)	np	np	np	np	23.2	13.8	37.0	np	62.6
Non-family member	46.8	57.8	104.6	7.2	111.8	70.7	182.6	6.5	61.3
Lone person	np	np	np	np	16.3	12.5	28.8	np	56.7
Not living alone	np	np	np	np	95.5	58.3	153.8	np	62.1
Country of birth									
Main English-speaking countries	61.2	10.4	71.6	*3.3	74.8	18.5	93.4	*4.4	80.2
Other than main English-speaking countries	110.6	119.0	229.6	12.9	242.5	142.0	384.4	5.3	63.1
Level of highest non-school qualification obtained before arrival									
Obtained a non-school qualification before arrival(c)	130.5	67.6	198.1	10.4	208.6	75.0	283.6	5.0	73.5
Bachelor degree or higher	92.4	48.5	140.9	*6.6	147.5	56.0	203.5	*4.5	72.5
Advanced diploma/Diploma	20.2	14.7	34.9	*2.9	37.8	15.6	53.4	*7.7	70.8
Certificate	13.6	*3.5	17.2	**1.0	18.1	**1.5	19.6	**5.4	92.5
Did not obtain a non-school qualification before arrival	41.3	61.8	103.0	*5.7	108.7	85.5	194.2	*5.2	56.0
Level of highest non-school qualification obtained since arrival									
Obtained a non-school qualification since arrival(c)	59.6	54.0	113.6	*6.5	120.1	29.6	149.7	*5.4	80.2
Bachelor degree or higher	34.6	17.1	51.7	*4.3	55.9	13.3	69.2	*7.6	80.8
Advanced diploma/Diploma	np	np	np	np	33.9	*8.7	42.6	np	79.6
Certificate	*8.4	17.4	25.8	**1.9	27.7	*6.4	34.1	**6.8	81.2
Has not obtained a non-school qualification since arrival	112.2	75.4	187.6	9.7	197.2	130.9	328.2	4.9	60.1
Total(d)	171.8	129.4	301.2	16.1	317.3	160.5	477.8	5.1	66.4

\* estimate has a relative standard error of 25% to 50% and should be used with caution

\*\* estimate has a relative standard error greater than 50% and is considered too unreliable for general use

— nil or rounded to zero (including null cells)

np not available for publication but included in totals where applicable, unless otherwise indicated

(a) Includes 'Status not determined'.

(b) Includes 'Non-dependent child'.

(c) Includes 'Level not determined'.

(d) Includes country of birth 'Inadequately described' and relationship in household 'Relationship not determined'.

	EMPLOYED						Not in the labour force	Unem- ployment rate	Labour force partic- ipation rate
	Full time	Part time	Total	Unem- ployed	Labour force	Total			
	'000	'000	'000	'000	'000	'000			
TOTAL (a)									
Sex									
Males	344.5	104.8	449.3	26.8	476.1	104.4	580.5	5.6	82.0
Females	202.7	142.1	344.8	35.4	380.3	248.2	628.4	9.3	60.5
Age group on arrival (years)									
15–19	33.7	29.4	63.1	12.3	75.4	57.0	132.4	16.3	57.0
20–24	105.6	77.5	183.2	13.5	196.6	91.6	288.2	6.8	68.2
25–34	249.2	93.9	343.1	22.9	366.0	110.1	476.1	6.3	76.9
35–44	127.6	34.1	161.7	10.5	172.3	47.9	220.2	6.1	78.2
45 and over	31.1	11.9	43.0	*3.1	46.1	46.1	92.1	*6.7	50.0
Year of arrival									
2001–2002	90.2	22.6	112.8	*4.6	117.4	33.0	150.4	*4.0	78.1
2003–2004	96.3	30.3	126.5	7.5	134.0	39.6	173.6	5.6	77.2
2005–2006	128.0	41.8	169.8	13.3	183.1	72.1	255.2	7.2	71.7
2007	70.3	30.5	100.9	*9.3	110.2	44.4	154.6	*8.5	71.3
2008	75.9	53.4	129.3	*8.1	137.3	50.2	187.5	*5.9	73.2
2009	54.4	53.6	108.0	10.6	118.6	67.6	186.2	8.9	63.7
2010 to survey date	32.1	14.8	46.9	*8.8	55.7	45.7	101.4	15.8	54.9
Relationship in household									
Family member	447.0	175.6	622.6	49.5	672.1	271.1	943.2	7.4	71.3
Husband, wife or partner	404.8	141.5	546.3	37.9	584.2	216.9	801.1	6.5	72.9
Lone parent	np	np	15.2	**1.3	16.5	11.3	27.8	**8.0	59.4
Dependent student	np	np	*7.0	*2.2	9.2	14.6	23.8	*24.2	38.8
Other related individual(b)	31.3	22.9	54.2	*8.1	62.2	28.3	90.5	*12.9	68.7
Non-family member	96.8	68.0	164.8	12.4	177.2	80.0	257.3	7.0	68.9
Lone person	35.5	*6.5	42.0	*4.2	46.2	17.7	63.9	*9.1	72.3
Not living alone	61.3	61.5	122.8	*8.2	131.0	62.4	193.4	6.3	67.8
Country of birth									
Main English-speaking countries	170.4	40.6	211.0	*10.4	221.4	43.5	264.9	*4.7	83.6
Other than main English-speaking countries	376.1	206.3	582.3	51.7	634.0	308.6	942.6	8.2	67.3
Level of highest non-school qualification obtained before arrival									
Obtained a non-school qualification before arrival(c)	416.6	137.2	553.8	35.5	589.3	165.1	754.4	6.0	78.1
Bachelor degree or higher	278.8	97.1	375.9	26.4	402.3	119.3	521.6	6.6	77.1
Advanced diploma/Diploma	69.2	30.2	99.4	5.3	104.6	30.7	135.3	5.0	77.3
Certificate	55.1	7.9	63.0	*3.0	66.0	9.2	75.2	*4.6	87.8
Did not obtain a non-school qualification before arrival	130.7	109.6	240.3	26.7	267.0	187.5	454.6	10.0	58.7
Level of highest non-school qualification obtained since arrival									
Obtained a non-school qualification since arrival(c)	194.3	92.7	287.0	23.5	310.5	60.9	371.4	7.6	83.6
Bachelor degree or higher	104.7	29.9	134.6	12.0	146.6	24.1	170.7	8.2	85.9
Advanced diploma/Diploma	36.3	31.5	67.8	*2.0	69.8	*13.8	83.6	*2.9	83.5
Certificate	46.5	29.2	75.7	*8.5	84.2	21.8	105.9	*10.0	79.5
Has not obtained a non-school qualification since arrival	352.9	154.2	507.1	38.7	545.8	291.7	837.5	7.1	65.2
<b>Total(d)</b>	<b>547.3</b>	<b>246.9</b>	<b>794.1</b>	<b>62.2</b>	<b>856.4</b>	<b>352.6</b>	<b>1 209.0</b>	<b>7.3</b>	<b>70.8</b>

\* estimate has a relative standard error of 25% to 50% and should be used with caution

\*\* estimate has a relative standard error greater than 50% and is considered too unreliable for general use

np not available for publication but included in totals where applicable, unless otherwise indicated

(a) Includes 'Status not determined'.

(b) Includes 'Non-dependent child'.

(c) Includes 'Level not determined'.

(d) Includes country of birth 'Inadequately described' and relationship in household 'Relationship not determined'.

	Oceania and Antarctica	North-West Europe	Southern and Eastern Europe	North Africa and the Middle East	South-East Asia
	'000	'000	'000	'000	'000
<b>RECENT MIGRANTS</b>					
Sex					
Males	*5.1	69.6	14.7	33.0	34.5
Females	*11.1	65.1	25.7	20.6	68.3
Age group on arrival (years)					
15–19	np	*6.3	*3.9	*4.2	13.9
20–24	*4.0	*12.2	*4.0	15.2	20.2
25–34	*4.7	54.3	16.8	21.8	35.0
35–44	**3.8	47.3	*8.8	8.8	23.9
45 and over	np	14.6	*6.9	*3.5	9.7
Year of arrival					
2001–2002	**3.1	26.0	13.2	*9.0	16.1
2003–2004	**2.1	25.4	*10.6	*9.3	18.2
2005–2006	*5.8	34.8	*6.2	*12.3	31.5
2007–2008	**2.8	32.1	*5.8	16.9	21.0
2009 to survey date	*2.3	16.4	*4.6	*6.0	15.9
Labour force status					
Labour force	*11.9	114.0	28.8	33.4	69.9
Employed	*9.8	107.9	26.8	25.1	64.4
Full time	*7.8	86.2	18.5	19.8	44.2
Part time	**2.0	21.7	*8.3	*5.3	20.2
Unemployed	**2.1	*6.1	*2.0	*8.3	5.5
Not in the labour force	*4.2	20.8	11.6	20.2	32.8
Type of visa as at November 2010(b)					
Australian citizen	**4.7	43.9	25.0	22.5	45.5
Permanent visa	*11.5	90.9	15.5	31.1	57.2
Skilled	**3.1	44.8	**5.1	*3.7	18.5
Family	*6.6	32.3	9.0	*14.0	31.2
Humanitarian	—	—	—	*12.3	**4.8
Other/n.f.d.	**1.8	*13.8	**1.4	**1.1	**2.8
Temporary visa	..	..	..	..	..
Type of visa on arrival to live in Australia(b)					
Permanent visa	*12.8	77.0	30.6	44.8	71.1
Skilled	*5.2	51.0	*5.5	*5.8	26.5
Family	7.6	22.1	16.7	20.3	37.6
Humanitarian	—	—	*8.4	*18.2	**7.0
Other/n.f.d.	—	*3.9	—	**0.4	—
Temporary visa	**3.3	57.7	9.8	8.3	31.7
Whether temporary resident before becoming a permanent resident					
Was temporary resident before becoming a permanent resident	**3.3	57.7	9.8	8.3	31.7
Was not temporary resident before becoming a permanent resident	*12.8	77.0	30.6	44.8	71.1
<i>Total(c)</i>	*16.1	134.7	40.4	53.6	102.8

\* estimate has a relative standard error of 25% to 50% and should be used with caution

\*\* estimate has a relative standard error greater than 50% and is considered too unreliable for general use

.. not applicable

— nil or rounded to zero (including null cells)

np not available for publication but included in totals where applicable, unless otherwise indicated

(a) Includes 'Status not determined'.

(b) Refers to type of visa of main applicant. His/her spouse and dependants may also be included in that visa type.

(c) Includes type of visa 'Status not determined'.

	North-East Asia	Southern and Central Asia	Americas	Sub-Saharan Africa	Total(b)
	'000	'000	'000	'000	'000
RECENT MIGRANTS					
Sex					
Males	46.3	72.4	13.1	36.5	325.8
Females	63.9	83.9	14.9	39.5	393.8
Age group on arrival (years)					
15–19	9.0	*9.2	—	*7.0	56.7
20–24	25.0	35.2	*5.7	*6.9	128.4
25–34	42.8	74.9	14.9	26.9	292.7
35–44	21.6	28.1	*5.9	24.8	173.7
45 and over	11.9	*8.9	**1.5	10.4	68.0
Year of arrival					
2001–2002	24.7	22.5	*5.2	*11.8	131.5
2003–2004	27.6	34.1	*3.9	*12.1	143.5
2005–2006	26.0	30.9	*7.3	15.0	169.8
2007–2008	17.3	38.7	*7.3	23.3	166.6
2009 to survey date	14.7	30.2	*4.2	13.8	108.1
Labour force status					
Labour force	79.8	116.1	22.2	56.1	533.0
Employed	73.8	104.8	22.2	52.3	487.9
Full time	54.0	83.0	20.0	37.1	371.4
Part time	19.8	21.8	**2.1	15.3	116.5
Unemployed	*6.0	11.3	—	*3.7	45.1
Not in the labour force	30.4	40.2	*5.8	19.9	186.5
Type of visa as at November 2010(c)					
Australian citizen	50.9	77.5	8.9	29.8	308.7
Permanent visa	59.4	78.8	19.0	46.1	410.9
Skilled	32.9	42.8	*7.0	24.8	184.0
Family	21.3	30.0	*10.7	*8.8	163.9
Humanitarian	np	*4.4	—	*9.8	32.3
Other/n.f.d.	np	**1.5	**1.4	*2.7	30.7
Temporary visa	..	..	..	..	..
Type of visa on arrival to live in Australia(c)					
Permanent visa	50.9	117.7	16.5	56.5	479.3
Skilled	26.4	67.7	*5.7	28.2	223.3
Family	23.7	40.0	10.4	13.8	192.5
Humanitarian	np	*7.5	—	*13.7	55.2
Other/n.f.d.	np	**2.5	*0.3	**0.8	*8.3
Temporary visa	58.5	38.6	11.5	19.4	239.0
Whether temporary resident before becoming a permanent resident					
Was temporary resident before becoming a permanent resident	58.5	38.6	11.5	19.4	239.0
Was not temporary resident before becoming a permanent resident	50.9	117.7	16.5	56.5	479.3
Total(d)	110.2	156.3	28.0	76.0	719.6

- \* estimate has a relative standard error of 25% to 50% and should be used with caution
- \*\* estimate has a relative standard error greater than 50% and is considered too unreliable for general use
- .. not applicable
- nil or rounded to zero (including null cells)
- np not available for publication but included in totals where applicable, unless otherwise indicated
- (a) Includes 'Status not determined'.
- (b) Includes 'Inadequately described'.
- (c) Refers to type of visa of main applicant. His/her spouse and dependants may also be included in that visa type.
- (d) Includes type of visa 'Status not determined'.



	Oceania and Antarctica	North-West Europe	Southern and Eastern Europe	North Africa and the Middle East	South-East Asia
	'000	'000	'000	'000	'000
TOTAL (b)					
Sex					
Males	*9.3	111.5	21.5	42.6	63.6
Females	14.9	104.9	31.7	27.3	108.8
Age group on arrival (years)					
15–19	*4.9	8.2	*4.3	*5.3	31.4
20–24	*6.0	30.4	*7.4	19.6	43.3
25–34	*6.7	92.7	22.4	31.1	55.8
35–44	*5.4	61.4	11.0	9.9	29.9
45 and over	**1.2	23.7	*8.1	*4.1	12.0
Year of arrival					
2001–2002	**3.1	30.7	13.6	*9.0	20.1
2003–2004	**2.1	29.1	*12.0	*9.9	21.6
2005–2006	7.7	46.5	8.8	*15.6	45.8
2007–2008	*5.7	57.6	*9.3	23.0	39.7
2009 to survey date	*5.6	52.5	*9.5	12.4	45.1
Labour force status					
Labour force	16.3	181.7	40.8	40.0	109.6
Employed	13.3	173.8	38.0	31.7	101.4
Full time	*9.6	140.3	24.6	23.3	63.5
Part time	*3.7	33.5	13.5	*8.4	37.9
Unemployed	*2.9	*7.9	*2.7	*8.3	8.2
Not in the labour force	*8.0	34.7	12.5	29.9	62.8
Type of visa as at November 2010(c)					
Australian citizen	**4.7	43.9	25.0	22.5	45.5
Permanent visa	*11.5	90.9	15.5	31.1	57.2
Skilled	**3.1	44.8	**5.1	*3.7	18.5
Family	*6.6	32.3	9.0	*14.0	31.2
Humanitarian	—	—	—	*12.3	**4.8
Other/n.f.d.	**1.8	*13.8	**1.4	**1.1	**2.8
Temporary visa	*7.6	79.9	12.5	15.8	68.7
Type of visa on arrival to live in Australia(c)					
Permanent visa	*12.8	78.4	30.9	45.8	71.1
Skilled	*5.2	51.6	*5.5	*6.3	26.5
Family	7.6	22.9	16.7	20.8	37.6
Humanitarian	—	—	*8.4	*18.2	**7.0
Other/n.f.d.	—	*3.9	**0.3	**0.4	—
Temporary visa	*11.4	138.0	22.3	23.6	101.3
Whether temporary resident before becoming a permanent resident					
Was temporary resident before becoming a permanent resident	**3.3	57.7	9.8	8.3	31.7
Was not temporary resident before becoming a permanent resident	*12.8	77.0	30.6	44.8	71.1
<b>Total(d)</b>	<b>24.2</b>	<b>216.4</b>	<b>53.3</b>	<b>69.9</b>	<b>172.4</b>

\* estimate has a relative standard error of 25% to 50% and should be used with caution

\*\* estimate has a relative standard error greater than 50% and is considered too unreliable for general use

— nil or rounded to zero (including null cells)

(a) Includes 'Status not determined'.

(b) Includes 'Temporary residents' and 'Status not determined'.

(c) Refers to type of visa of main applicant. His/her spouse and dependants may also be included in that visa type.

(d) Includes type of visa 'Status not determined'.

	North-East Asia	Southern and Central Asia	Americas	Sub-Saharan Africa	Total(b)
	'000	'000	'000	'000	'000
TOTAL (c)					
Sex					
Males	112.5	140.6	27.0	51.0	580.5
Females	131.0	126.7	31.0	51.3	628.4
Age group on arrival (years)					
15–19	45.6	21.1	np	10.2	132.4
20–24	80.0	76.0	14.5	11.1	288.2
25–34	78.9	123.5	30.3	34.3	476.1
35–44	25.3	35.2	8.8	32.4	220.2
45 and over	13.7	*11.6	np	14.3	92.1
Year of arrival					
2001–2002	32.3	23.5	*5.2	12.9	150.4
2003–2004	43.1	38.0	*4.1	*13.6	173.6
2005–2006	53.6	47.2	10.6	19.4	255.2
2007–2008	59.3	96.1	16.1	33.9	342.1
2009 to survey date	55.2	62.6	22.0	22.6	287.6
Labour force status					
Labour force	144.8	204.0	42.1	76.2	856.4
Employed	134.8	188.7	40.1	71.5	794.1
Full time	81.8	120.2	30.8	52.4	547.3
Part time	53.0	68.6	*9.3	19.1	246.9
Unemployed	10.0	15.3	*2.0	*4.7	62.2
Not in the labour force	98.7	63.4	15.9	26.2	352.6
Type of visa as at November 2010(d)					
Australian citizen	50.9	77.5	8.9	29.8	308.7
Permanent visa	59.4	78.8	19.0	46.1	410.9
Skilled	32.9	42.8	*7.0	24.8	184.0
Family	21.3	30.0	*10.7	*8.8	163.9
Humanitarian	np	*4.4	—	*9.8	32.3
Other/n.f.d.	np	**1.5	**1.4	*2.7	30.7
Temporary visa	130.0	108.2	29.2	26.0	477.8
Type of visa on arrival to live in Australia(d)					
Permanent visa	53.3	119.9	16.9	56.5	487.1
Skilled	27.4	69.2	*5.7	28.2	227.0
Family	25.1	40.2	10.9	13.8	195.7
Humanitarian	np	*8.0	—	*13.7	55.7
Other/n.f.d.	np	**2.5	**0.3	**0.8	*8.6
Temporary visa	189.0	147.5	41.1	45.8	720.1
Whether temporary resident before becoming a permanent resident					
Was temporary resident before becoming a permanent resident	58.5	38.6	11.5	19.4	239.0
Was not temporary resident before becoming a permanent resident	50.9	117.7	16.5	56.5	479.3
<b>Total(e)</b>	<b>243.6</b>	<b>267.4</b>	<b>58.0</b>	<b>102.4</b>	<b>1 209.0</b>

\* estimate has a relative standard error of 25% to 50% and should be used with caution

\*\* estimate has a relative standard error greater than 50% and is considered too unreliable for general use

— nil or rounded to zero (including null cells)

np not available for publication but included in totals where applicable, unless otherwise indicated

(a) Includes 'Status not determined'.

(b) Includes 'Inadequately described'.

(c) Includes 'Temporary residents' and 'Status not determined'.

(d) Refers to type of visa of main applicant. His/her spouse and dependants may also be included in that visa type.

(e) Includes type of visa 'Status not determined'.

# RECENT MIGRANTS AND TEMPORARY RESIDENTS(a), Type of visa on arrival to live in Australia and applicant status—By labour force status

Type of visa on arrival to live in Australia	EMPLOYED			Unemployed	Labour force	Not in the labour force	Total	Unemployment rate	Labour force participation rate
	Full time	Part time	Total						
	'000	'000	'000	'000	'000	'000	'000	%	%
<b>MAIN APPLICANT FOR INITIAL VISA</b>									
Permanent visa	182.5	45.6	228.2	17.8	246.0	94.1	340.1	7.2	72.3
Skilled	95.1	14.4	109.5	**2.0	111.5	14.3	125.9	*1.8	88.6
Independent	50.3	*5.0	55.4	**2.0	57.4	*5.8	63.3	*3.5	90.8
Other/n.f.d.	44.8	9.3	54.1	—	54.1	8.5	62.6	—	86.4
Family	75.8	26.4	102.2	12.7	114.9	62.2	177.1	11.1	64.9
Humanitarian	*8.8	*4.4	*13.1	**3.0	*16.2	*15.6	31.8	*18.8	50.9
Other/n.f.d.	*2.8	**0.5	*3.3	—	*3.3	*1.9	*5.3	—	63.2
Temporary visa	270.4	144.6	415.1	26.5	441.6	170.3	611.8	6.0	72.2
Student	116.1	115.3	231.4	18.2	249.6	123.6	373.2	7.3	66.9
Other/n.f.d.	154.4	29.3	183.7	8.3	191.9	46.7	238.6	4.3	80.4
<b>Total(a)</b>	<b>453.8</b>	<b>190.7</b>	<b>644.5</b>	<b>44.3</b>	<b>688.8</b>	<b>264.4</b>	<b>953.2</b>	<b>6.4</b>	<b>72.3</b>
<b>OTHER APPLICANT FOR INITIAL VISA</b>									
Permanent visa	50.0	31.2	81.2	12.8	93.9	52.0	146.0	13.6	64.4
Skilled	40.4	23.4	63.8	*8.5	72.3	28.4	100.7	*11.8	71.8
Independent	17.3	12.8	30.1	*3.9	34.0	13.2	47.2	*11.5	72.0
Other/n.f.d.	23.1	10.7	33.7	*4.6	38.3	15.2	53.5	*12.0	71.7
Family	*4.7	*4.9	9.6	**0.5	10.1	8.5	18.6	**5.1	54.5
Humanitarian	*4.2	*2.3	*6.5	*2.8	*9.3	*14.0	23.3	*30.2	40.0
Other/n.f.d.	**0.7	**0.6	**1.3	**0.9	**2.2	**1.2	*3.3	**42.0	*64.9
Temporary visa	42.0	25.0	67.0	*4.6	71.6	35.2	106.8	*6.4	67.0
Student	15.2	9.2	24.4	**1.9	26.3	9.0	35.3	*7.3	74.6
Other/n.f.d.	26.8	15.8	42.6	*2.6	45.2	26.2	71.5	*5.8	63.3
<b>Total(a)</b>	<b>92.5</b>	<b>56.1</b>	<b>148.7</b>	<b>17.3</b>	<b>166.0</b>	<b>87.2</b>	<b>253.2</b>	<b>10.4</b>	<b>65.6</b>
<b>TOTAL (b)</b>									
Permanent visa	232.6	76.8	309.4	31.2	340.5	146.5	487.1	9.2	69.9
Skilled	135.5	37.8	173.3	*10.5	183.8	43.1	227.0	*5.7	81.0
Independent	67.6	17.8	85.5	*5.9	91.4	19.1	110.5	*6.5	82.7
Other/n.f.d.	67.9	20.0	87.8	*4.6	92.5	24.1	116.5	*5.0	79.3
Family	80.6	31.3	111.8	13.2	125.0	70.7	195.7	10.6	63.9
Humanitarian	13.0	*6.6	19.6	*6.5	26.1	29.6	55.7	*24.8	46.9
Other/n.f.d.	*3.5	**1.1	*4.6	**0.9	*5.5	*3.1	*8.6	**16.5	63.8
Temporary visa	313.4	169.6	483.0	31.1	514.1	206.1	720.1	6.0	71.4
Student	131.3	124.5	255.8	20.2	276.0	132.5	408.5	7.3	67.6
Other/n.f.d.	182.1	45.1	227.2	10.9	238.1	73.6	311.6	4.6	76.4
<b>Total(a)</b>	<b>547.3</b>	<b>246.9</b>	<b>794.1</b>	<b>62.2</b>	<b>856.4</b>	<b>352.6</b>	<b>1 209.0</b>	<b>7.3</b>	<b>70.8</b>

\* estimate has a relative standard error of 25% to 50% and should be used with caution

\*\* estimate has a relative standard error greater than 50% and is considered too unreliable for general use

— nil or rounded to zero (including null cells)

(a) Includes type of visa 'Status not determined'.

(b) Includes 'Applicant status not known'.

# RECENT MIGRANTS AND TEMPORARY RESIDENTS (a), Selected characteristics—By type of visa on arrival to live in Australia

	PERMANENT VISA					TEMPORARY VISA			Total(a)
	Skilled	Family	Humanitarian	Other/n.f.d.	Total	Student	Other/n.f.d.	Total	
	'000	'000	'000	'000	'000	'000	'000	'000	
Sex									
Males	116.8	62.4	31.3	*3.7	214.3	215.7	149.1	364.8	580.5
Females	110.2	133.3	24.5	4.9	272.8	192.8	162.5	355.3	628.4
Age group on arrival (years)									
15–19	14.3	13.1	*9.5	**0.9	37.8	77.3	17.3	94.6	132.4
20–24	*8.8	46.3	11.5	**0.8	67.3	168.7	51.7	220.4	288.2
25–34	93.1	80.4	*19.7	**2.3	195.6	140.7	139.3	280.0	476.1
35–44	87.2	34.8	*8.1	**1.5	131.6	19.7	68.8	88.6	220.2
45 and over	23.6	21.1	*7.0	*3.1	54.8	*2.1	34.5	36.6	92.1
Country of birth									
Main English-speaking countries	69.2	30.0	np	np	104.1	18.1	142.7	160.8	264.9
Other than main English-speaking countries	156.4	165.6	55.2	*4.2	381.5	390.3	169.0	559.3	942.6
State or territory of usual residence									
New South Wales	65.6	78.9	*18.8	**1.7	165.1	150.5	105.3	255.8	420.9
Victoria	63.7	47.6	*15.5	**1.4	128.2	142.1	75.6	217.7	346.4
Queensland	27.6	26.9	*6.1	**1.8	62.4	53.2	54.1	107.3	171.0
South Australia	25.1	12.3	7.1	**0.8	45.4	21.7	10.8	32.6	78.0
Western Australia	37.5	25.4	*5.5	**2.7	71.1	36.3	55.4	91.7	162.8
Tasmania	*1.5	*1.1	**0.6	—	*3.2	*1.2	*2.2	3.5	6.6
Northern Territory	*1.2	*1.9	**1.0	**0.2	4.3	**0.6	*3.5	4.1	8.3
Australian Capital Territory	*4.9	*1.5	*1.1	—	7.5	2.9	*4.6	7.5	15.0
Area of usual residence									
Capital city	207.7	163.1	54.2	*7.5	432.4	369.8	245.8	615.6	1 049.3
Balance of state/territory	19.3	32.6	**1.6	**1.1	54.6	38.7	65.9	104.6	159.6
Language other than English mainly spoken on arrival									
Proficiency in spoken English when first came to live in Australia									
Very well	22.1	18.0	*3.0	**1.1	44.1	28.0	19.6	47.7	91.8
Well	40.7	38.3	9.4	**0.5	89.0	112.6	36.4	149.0	238.8
Not well	29.7	38.4	20.9	**0.7	89.6	128.2	39.3	167.5	257.5
Not at all	*7.9	21.8	*18.5	**0.8	48.9	13.1	12.9	26.0	74.9
Total(b)	100.4	116.8	51.7	*3.0	272.0	282.5	108.2	390.7	664.0
English mainly spoken on arrival	126.6	78.9	*4.0	*5.6	215.0	126.0	203.4	329.4	544.9
Language other than English mainly spoken at home									
Current proficiency in spoken English									
Very well	37.4	23.3	*7.3	—	68.0	69.4	26.5	95.9	163.9
Well	48.1	36.8	17.2	**0.5	102.6	152.7	42.2	194.9	298.3
Not well	13.6	31.5	23.1	**1.0	69.2	44.5	28.0	72.4	142.1
Not at all	*4.3	*4.3	*3.3	**0.4	12.3	*2.4	**1.1	*3.5	15.8
Total(b)	103.3	96.6	51.0	*2.0	252.8	269.9	97.9	367.8	621.9
English mainly spoken at home	123.7	99.1	*4.8	*6.7	234.3	138.5	213.8	352.3	587.1
<b>Total(c)</b>	<b>227.0</b>	<b>195.7</b>	<b>55.7</b>	<b>*8.6</b>	<b>487.1</b>	<b>408.5</b>	<b>311.6</b>	<b>720.1</b>	<b>1 209.0</b>

\* estimate has a relative standard error of 25% to 50% and should be used with caution

\*\* estimate has a relative standard error greater than 50% and is considered too unreliable for general use

— nil or rounded to zero (including null cells)

np not available for publication but included in totals where applicable, unless otherwise indicated

(a) Includes type of visa 'Status not determined'.

(b) Includes 'Proficiency not determined'.

(c) Includes country of birth 'Inadequately described'.

	PERMANENT VISA					TEMPORARY VISA				Total (a)
	Australian citizen	Skilled	Family	Humanitarian	Other/n.f.d.	Total	Student	Other/n.f.d.	Total	
	'000	'000	'000	'000	'000	'000	'000	'000	'000	
<b>Sex</b>										
Males	142.7	94.3	55.0	*20.0	13.7	183.0	145.2	103.8	249.0	580.5
Females	165.9	89.7	108.9	12.2	17.0	227.8	118.1	110.7	228.8	628.4
<b>Age group on arrival (years)</b>										
15–19	29.0	12.8	*8.4	*4.5	**2.0	27.7	59.5	16.1	75.6	132.4
20–24	55.3	21.4	37.2	*7.3	*7.3	73.1	112.8	45.0	157.8	288.2
25–34	122.5	68.8	76.4	*13.7	*11.3	170.1	81.9	96.4	178.3	476.1
35–44	73.6	62.4	28.3	*3.2	*6.1	100.1	*6.7	37.4	44.1	220.2
45 and over	28.2	18.6	13.6	*3.6	*4.0	39.9	*2.4	19.6	21.9	92.1
<b>Country of birth</b>										
Main English-speaking countries	62.3	58.3	36.1	np	np	107.8	10.8	82.6	93.4	264.9
Other than main English-speaking countries	246.4	124.3	127.8	31.8	17.8	301.7	252.5	131.9	384.4	942.6
<b>State or territory of usual residence</b>										
New South Wales	121.4	47.4	61.7	*12.3	*11.1	132.5	91.7	72.5	164.2	420.9
Victoria	82.3	54.3	41.8	**7.5	*5.6	109.1	94.4	54.8	149.2	346.4
Queensland	41.2	24.2	20.4	**3.7	*7.0	55.4	33.6	38.6	72.1	171.0
South Australia	14.2	19.8	12.8	*5.7	*1.3	39.5	15.5	8.6	24.2	78.0
Western Australia	40.2	31.8	24.2	**2.4	*5.2	63.6	24.9	33.3	58.2	162.8
Tasmania	*2.0	*1.0	*1.3	—	—	2.3	*1.1	*1.3	*2.4	6.6
Northern Territory	*2.3	*1.6	*1.2	np	np	3.5	**0.4	*2.2	*2.5	8.3
Australian Capital Territory	5.0	*3.9	**0.6	np	np	5.0	*1.8	*3.2	5.0	15.0
<b>Area of usual residence</b>										
Capital city	277.9	161.8	131.0	32.3	26.5	351.6	240.0	171.4	411.4	1 049.3
Balance of state/territory	30.8	22.2	32.9	—	*4.2	59.3	*23.3	43.1	66.4	159.6
<b>Language other than English mainly spoken on arrival</b>										
Proficiency in spoken English when first came to live in Australia										
Very well	29.0	18.0	12.1	**1.4	*2.8	34.3	14.4	14.0	28.4	91.8
Well	66.3	31.8	29.0	6.9	*4.5	72.2	68.4	30.0	98.4	238.8
Not well	56.3	32.4	28.9	*12.8	*2.8	76.8	88.7	31.8	120.5	257.5
Not at all	23.7	*4.5	17.9	*8.9	*0.8	32.1	*10.1	7.5	17.6	74.9
Total(b)	175.7	86.6	88.0	30.1	10.8	215.5	182.2	83.3	265.5	664.0
English mainly spoken on arrival	133.0	97.4	76.0	*2.2	19.9	195.4	81.1	131.2	212.3	544.9
<b>Language other than English mainly spoken at home</b>										
Current proficiency in spoken English										
Very well	57.9	27.8	13.2	*3.1	*2.4	46.6	34.1	25.3	59.4	163.9
Well	71.4	38.9	28.8	*11.8	*3.8	83.3	106.0	36.1	142.1	298.3
Not well	28.4	16.9	25.4	*13.2	*0.3	55.8	33.9	20.9	54.8	142.1
Not at all	*4.3	np	*4.3	*1.8	np	*7.4	**1.8	**1.7	*3.5	15.8
Total(b)	162.1	85.1	72.5	29.9	*7.0	194.4	176.3	84.0	260.3	621.9
English mainly spoken at home	146.6	98.9	91.5	*2.4	23.7	216.5	87.0	130.5	217.5	587.1
<b>Total(c)</b>	<b>308.7</b>	<b>184.0</b>	<b>163.9</b>	<b>32.3</b>	<b>30.7</b>	<b>410.9</b>	<b>263.3</b>	<b>214.5</b>	<b>477.8</b>	<b>1 209.0</b>

\* estimate has a relative standard error of 25% to 50% and should be used with caution

\*\* estimate has a relative standard error greater than 50% and is considered too unreliable for general use

— nil or rounded to zero (including null cells)

np not available for publication but included in totals where applicable, unless otherwise indicated

(a) Includes type of visa 'Status not determined'.

(b) Includes 'Proficiency not determined'.

(c) Includes country of birth 'Inadequately described'.

RECENT MIGRANTS AND TEMPORARY RESIDENTS(a), Type of visa as at November 2010(b)—By type of visa on arrival to live in Australia(b)

Type of visa as at November 2010	PERMANENT VISA					Temporary visa	Total(a)	% whose initial visa was temporary
	Skilled	Family	Humanitarian	Other/n.f.d.	Total			
	'000	'000	'000	'000	'000	'000	'000	%
Australian citizen	99.0	64.5	25.5	*2.9	191.9	115.5	308.7	37.4
Permanent visa	124.3	128.0	29.7	*5.4	287.4	123.5	410.9	30.1
Skilled	122.8	np	—	np	123.5	60.5	184.0	32.9
Family	np	123.0	—	np	123.9	40.1	163.9	24.5
Humanitarian	—	—	29.7	—	29.7	*2.5	32.3	**7.8
Other/n.f.d.	np	np	—	np	*10.4	20.3	30.7	66.2
Temporary visa	np	**3.2	—	np	*4.4	473.4	477.8	99.1
<b>Total(a)</b>	<b>227.0</b>	<b>195.7</b>	<b>55.7</b>	<b>*8.6</b>	<b>487.1</b>	<b>720.1</b>	<b>1 209.0</b>	<b>59.6</b>

\* estimate has a relative standard error of 25% to 50% and should be used with caution

\*\* estimate has a relative standard error greater than 50% and is considered too unreliable for general use

— nil or rounded to zero (including null cells)

np not available for publication but included in totals where applicable, unless otherwise indicated

(a) Includes type of visa 'Status not determined'.

(b) Refers to type of visa of main applicant. His/her spouse and dependants may also be included in that visa type.

# RECENT MIGRANTS AND TEMPORARY RESIDENTS (a), Selected characteristics—By whether left job overseas when came to live in Australia

	LEFT JOB WHEN CAME TO LIVE IN AUSTRALIA .....		DID NOT LEAVE JOB WHEN CAME TO LIVE IN AUSTRALIA .....		Persons(b)
	Males	Females	Males	Females	
RECENT MIGRANTS					
Age group on arrival (years)					
15–19	**2.2	*3.4	23.3	27.2	56.7
20–24	18.1	32.2	26.8	50.2	128.4
25–34	111.5	121.3	22.0	37.2	292.7
35–44	78.0	57.0	10.3	28.3	173.7
45 and over	25.1	16.2	6.7	19.2	68.0
Year of arrival					
2001–2002	39.1	41.1	19.8	30.3	131.5
2003–2004	46.8	42.5	20.2	32.9	143.5
2005–2006	50.4	58.4	23.6	36.4	169.8
2007	27.8	25.6	*7.5	17.7	78.6
2008	34.2	28.7	*7.5	17.6	88.0
2009	25.7	20.0	*7.3	18.5	71.5
2010 to survey date	10.8	13.7	*3.3	8.8	36.6
Country of birth					
Main English-speaking countries	76.3	63.5	9.7	20.0	170.1
Other than main English-speaking countries	157.8	166.0	79.4	142.1	548.1
Level of highest non-school qualification obtained before arrival					
Obtained a non-school qualification before arrival(c)	183.6	182.3	35.1	64.5	465.4
Bachelor degree or higher	111.7	134.8	21.3	45.9	313.6
Advanced diploma/Diploma	31.6	30.4	*6.5	13.4	81.9
Certificate	34.9	10.7	5.3	*4.2	55.1
Did not obtain a non-school qualification before arrival	51.2	47.8	54.1	97.7	254.1
Level of highest non-school qualification obtained since arrival					
Obtained a non-school qualification since arrival(c)	67.0	71.5	31.2	49.0	219.8
Bachelor degree or higher	29.4	26.7	19.1	25.2	101.0
Advanced diploma/Diploma	*12.6	14.1	*5.9	*7.0	40.1
Certificate	22.9	29.6	*4.0	14.9	71.3
Has not obtained a non-school qualification since arrival	167.8	158.5	58.0	113.2	499.7
Total(d)	234.8	230.1	89.2	162.2	719.6

\* estimate has a relative standard error of 25% to 50% and should be used with caution

\*\* estimate has a relative standard error greater than 50% and is considered too unreliable for general use

(a) Includes type of visa 'Status not determined'.

(b) Includes 'Did not know whether had a job just before arrival'.

(c) Includes 'Level not determined'.

(d) Includes country of birth 'Inadequately described'.

	LEFT JOB WHEN CAME TO LIVE IN AUSTRALIA		DID NOT LEAVE JOB WHEN CAME TO LIVE IN AUSTRALIA		Persons(b)
	Males	Females	Males	Females	
TEMPORARY RESIDENTS					
Age group on arrival (years)					
15–19	*1.8	**1.6	35.9	36.2	75.6
20–24	25.6	27.6	56.2	46.7	157.8
25–34	70.0	58.2	26.0	21.2	178.3
35–44	16.3	17.5	*2.9	7.3	44.1
45 and over	9.4	*5.8	*1.9	*4.8	21.9
Year of arrival					
2001–2002	**1.9	*3.2	*6.9	*6.9	18.9
2003–2004	*3.9	*5.3	*8.8	*8.7	27.3
2005–2006	20.7	15.5	22.4	22.9	82.1
2007	26.0	15.2	12.9	20.8	75.5
2008	26.4	25.3	29.1	15.9	97.9
2009	27.0	28.6	28.4	26.9	112.0
2010 to survey date	17.2	17.8	*14.4	14.3	64.2
Country of birth					
Main English-speaking countries	39.4	33.1	10.1	10.8	93.4
Other than main English-speaking countries	83.7	77.7	112.8	105.5	384.4
Level of highest non-school qualification obtained before arrival					
Obtained a non-school qualification before arrival(c)	96.0	85.3	50.6	49.4	283.6
Bachelor degree or higher	68.3	65.1	35.5	32.9	203.5
Advanced diploma/Diploma	13.7	16.6	9.2	13.8	53.4
Certificate	np	np	*4.7	*1.9	19.6
Did not obtain a non-school qualification before arrival	27.1	25.4	72.3	66.9	194.2
Level of highest non-school qualification obtained since arrival					
Obtained a non-school qualification since arrival(c)	33.0	29.7	41.3	43.9	149.7
Bachelor degree or higher	9.5	14.9	22.0	22.1	69.2
Advanced diploma/Diploma	*10.5	7.8	*10.8	12.3	42.6
Certificate	13.0	*6.0	*6.2	9.0	34.1
Has not obtained a non-school qualification since arrival	90.1	81.1	81.6	72.4	328.2
<b>Total(d)</b>	<b>123.1</b>	<b>110.8</b>	<b>122.9</b>	<b>116.3</b>	<b>477.8</b>

\* estimate has a relative standard error of 25% to 50% and should be used with caution

\*\* estimate has a relative standard error greater than 50% and is considered too unreliable for general use

np not available for publication but included in totals where applicable, unless otherwise indicated

(a) Includes type of visa 'Status not determined'.

(b) Includes 'Did not know whether had a job just before arrival'.

(c) Includes 'Level not determined'.

(d) Includes country of birth 'Inadequately described'.



	LEFT JOB WHEN CAME TO LIVE IN AUSTRALIA		DID NOT LEAVE JOB WHEN CAME TO LIVE IN AUSTRALIA		Persons(b)
	Males	Females	Males	Females	
TOTAL (a)					
Age group on arrival (years)					
15–19	*4.0	*5.1	59.2	63.5	132.4
20–24	44.1	60.3	83.6	97.0	288.2
25–34	182.7	181.8	48.4	58.9	476.1
35–44	94.8	75.4	13.6	36.2	220.2
45 and over	35.0	22.3	9.2	24.8	92.1
Year of arrival					
2001–2002	41.0	44.3	26.7	37.2	150.4
2003–2004	51.3	48.6	29.0	42.5	173.6
2005–2006	72.0	74.9	46.4	60.2	255.2
2007	53.8	41.3	20.4	38.5	154.6
2008	61.3	54.5	37.0	33.5	187.5
2009	53.2	49.7	36.8	45.4	186.2
2010 to survey date	28.0	31.5	17.7	23.1	101.4
Country of birth					
Main English-speaking countries	116.8	96.6	19.8	31.1	264.9
Other than main English-speaking countries	243.1	247.7	194.2	249.1	942.6
Level of highest non-school qualification obtained before arrival					
Obtained a non-school qualification before arrival(c)	281.8	269.8	86.1	114.4	754.4
Bachelor degree or higher	181.7	202.1	56.7	79.3	521.6
Advanced diploma/Diploma	45.3	47.1	15.8	27.2	135.3
Certificate	46.9	11.6	10.1	6.0	75.2
Did not obtain a non-school qualification before arrival	78.9	75.0	128.0	165.9	454.6
Level of highest non-school qualification obtained since arrival					
Obtained a non-school qualification since arrival(c)	100.4	102.2	72.5	93.5	371.4
Bachelor degree or higher	39.4	41.7	41.1	47.3	170.7
Advanced diploma/Diploma	23.1	22.8	16.7	19.3	83.6
Certificate	35.8	35.6	10.2	24.3	105.9
Has not obtained a non-school qualification since arrival	260.2	242.7	141.6	186.9	837.5
<b>Total(d)</b>	<b>360.6</b>	<b>344.8</b>	<b>214.1</b>	<b>280.4</b>	<b>1 209.0</b>

\* estimate has a relative standard error of 25% to 50% and should be used with caution

(a) Includes type of visa 'Status not determined'.

(b) Includes 'Did not know whether had a job just before arrival'.

(c) Includes 'Level not determined'.

(d) Includes country of birth 'Inadequately described'.

	Wages or salary	Government pension or allowance (b)	Other source of income	Total (c)
	'000	'000	'000	'000
RECENT MIGRANTS				
Year of arrival				
2001–2002	114.3	10.3	*6.9	131.5
2003–2004	127.1	10.6	*4.2	143.5
2005–2006	140.9	*13.8	12.0	169.8
2007	67.2	*7.3	np	78.6
2008	78.2	*5.3	*3.5	88.0
2009	53.9	*10.1	*4.8	71.5
2010 to survey date	28.5	**5.3	np	36.6
Country of birth				
Main English-speaking countries	155.6	*3.2	9.0	170.1
Other than main English-speaking countries	453.2	59.5	24.0	548.1
Type of visa on arrival to live in Australia (d)				
Permanent visa	397.2	52.4	18.8	479.3
Skilled	206.8	*4.3	*6.5	223.3
Family	161.0	16.5	*10.9	192.5
Humanitarian	*23.0	31.3	np	55.2
Other/n.f.d.	*6.4	**0.4	np	*8.3
Temporary visa	211.7	*10.2	14.2	239.0
Student	97.5	**2.6	*7.5	109.8
Other/n.f.d.	114.2	*7.6	*6.7	129.2
Total (e)	610.2	62.6	33.1	719.6

## TEMPORARY RESIDENTS

Year of arrival				
2001–2002	15.5	—	*2.4	18.9
2003–2004	20.3	**1.7	*5.3	27.3
2005–2006	62.7	*3.0	13.6	82.1
2007	60.7	**4.0	*8.4	75.5
2008	78.3	*4.4	*11.7	97.9
2009	83.0	**6.4	15.3	112.0
2010 to survey date	46.6	**6.1	8.3	64.2
Country of birth				
Main English-speaking countries	87.4	*2.7	**2.5	93.4
Other than main English-speaking countries	279.8	22.9	62.6	384.4
Type of visa on arrival to live in Australia (d)				
Permanent visa	**3.4	np	—	*4.4
Skilled	np	np	—	np
Family	np	np	—	np
Humanitarian	—	—	—	—
Other/n.f.d.	—	—	—	—
Temporary visa	363.8	24.5	65.1	473.4
Student	201.0	*19.7	59.1	295.9
Other/n.f.d.	162.8	*4.8	*6.0	177.4
Total (e)	367.2	25.5	65.1	477.8

\* estimate has a relative standard error of 25% to 50% and should be used with caution

\*\* estimate has a relative standard error greater than 50% and is considered too unreliable for general use

— nil or rounded to zero (including null cells)

np not available for publication but included in totals where applicable, unless otherwise indicated

(a) Includes 'Status not determined'.

(b) Includes Australian and overseas government pension or allowance.

(c) Includes 'Main source of household income not determined'.

(d) Refers to type of visa of main applicant. His/her spouse and dependants may also be included in that visa type.

(e) Includes type of visa 'Status not determined' and country of birth 'Inadequately described'.

	Wages or salary	Government pension or allowance (b)	Other source of income	Total (c)
	'000	'000	'000	'000
TOTAL (a)				
Year of arrival				
2001–2002	129.8	10.3	9.3	150.4
2003–2004	149.4	13.1	*9.5	173.6
2005–2006	206.5	17.3	25.5	255.2
2007	128.5	*11.3	*10.0	154.6
2008	158.1	*9.6	15.2	187.5
2009	138.5	*17.0	20.6	186.2
2010 to survey date	75.7	*11.3	8.5	101.4
Country of birth				
Main English-speaking countries	244.5	*5.8	11.5	264.9
Other than main English-speaking countries	740.7	84.2	87.1	942.6
Type of visa on arrival to live in Australia (d)				
Permanent visa	402.5	54.9	18.8	487.1
Skilled	209.2	*5.5	*6.5	227.0
Family	163.9	16.8	*10.9	195.7
Humanitarian	*23.0	31.8	np	55.7
Other/n.f.d.	*6.4	**0.8	np	*8.6
Temporary visa	582.2	35.1	79.8	720.1
Student	300.2	22.8	67.1	408.5
Other/n.f.d.	282.0	12.3	12.7	311.6
<b>Total (e)</b>	<b>986.5</b>	<b>90.0</b>	<b>98.7</b>	<b>1 209.0</b>

\* estimate has a relative standard error of 25% to 50% and should be used with caution

\*\* estimate has a relative standard error greater than 50% and is considered too unreliable for general use

np not available for publication but included in totals where applicable, unless otherwise indicated

(a) Includes 'Status not determined'.

(b) Includes Australian and overseas government pension or allowance.

(c) Includes 'Main source of household income not determined'.

(d) Refers to type of visa of main applicant. His/her spouse and dependants may also be included in that visa type.

(e) Includes type of visa 'Status not determined' and country of birth 'Inadequately described'.

RECENT MIGRANTS AND TEMPORARY RESIDENTS WITHOUT A NON-SCHOOL QUALIFICATION  
ON ARRIVAL, Selected characteristics—By whether recent migrant or temporary resident

	<i>Recent migrants</i>	<i>Temporary residents</i>	<i>Total(a)</i>
	'000	'000	'000
.....			
Sex			
Males	107.1	100.7	210.9
Females	147.0	93.5	243.7
Age group (years)			
15–24	58.4	105.8	164.8
25–34	87.1	62.5	151.7
35–44	63.6	15.0	80.0
45 and over	45.0	10.9	58.1
Marital status			
Married	166.2	71.9	240.6
Not married	87.9	122.2	214.0
Country of birth			
Oceania and Antarctica	7.9	*5.2	13.5
North-West Europe	41.4	17.7	59.6
Southern and Eastern Europe	14.8	*4.0	19.1
North Africa and the Middle East	30.3	*4.8	35.7
South-East Asia	50.2	31.8	82.0
North-East Asia	38.1	74.6	114.3
Southern and Central Asia	38.1	38.0	78.0
Americas	*5.3	*8.2	*13.9
Sub-Saharan Africa	27.4	*9.9	37.8
Country of birth			
Main English-speaking countries	48.6	23.2	72.2
Other than main English-speaking countries	205.0	171.0	381.9
Whether temporary resident before becoming permanent resident			
Was temporary resident before permanent resident	76.9	. .	76.9
Was not temporary resident before permanent resident	175.9	. .	175.9
Applicant status on visa as at November 2010			
Main applicant	88.2	169.2	257.4
Other applicant	48.4	25.0	79.7
Level of highest non-school qualification since arrival			
Obtained a non-school qualification since arrival(b)	63.3	56.9	121.2
Bachelor degree or higher	29.9	25.1	55.0
Advanced diploma/Diploma	*13.7	*17.6	32.3
Certificate	18.0	*11.7	29.8
Has not obtained a non-school qualification since arrival	190.8	137.3	333.4
Whether studying full-time			
Studying full time (aged less than 25 years)	28.4	82.6	111.0
Not studying full time (aged less than 25 years)	30.0	23.3	53.8
Labour force status			
Labour force	154.8	108.7	267.0
Employed	134.7	103.0	240.3
Unemployed	20.1	*5.7	26.7
Not in the labour force	99.3	85.5	187.5
<b>Total(c)</b>	<b>254.1</b>	<b>194.2</b>	<b>454.6</b>

\* estimate has a relative standard error of 25% to 50% and should be used with caution

. . not applicable

(a) Includes 'Status not determined'.

(b) Includes 'Level not determined'.

(c) Includes country of birth 'Inadequately described', 'Applicant status not known' and whether temporary resident before becoming permanent resident 'Could not be determined'.

	Australian citizen	PERMANENT VISA			Temporary visa	Total (a)
		Skilled	Family	Total (b)		
	'000	'000	'000	'000	'000	'000
.....						
Sex						
Males	16.8	*6.4	6.7	21.7	64.2	104.4
Females	49.2	33.7	49.1	98.8	96.3	248.2
Age group (years)						
15–24	*9.2	*5.0	*8.1	18.5	73.1	101.4
25–34	21.9	14.3	23.1	45.9	60.3	129.9
35–44	14.2	13.5	12.9	31.0	15.6	61.2
45 and over	20.7	*7.3	11.8	25.1	11.5	60.0
Marital status						
Married	49.6	31.2	47.2	92.8	70.6	217.2
Not married	16.4	*9.0	*8.6	27.7	89.9	135.3
Country of birth						
Main English-speaking countries	*5.9	9.1	*8.7	18.8	18.5	43.5
Other than main English-speaking countries	60.1	30.6	47.1	101.3	142.0	308.6
Applicant status on visa as at November 2010						
Main applicant	..	10.4	50.1	76.9	134.7	213.5
Other applicant	..	29.3	*5.8	43.2	25.8	72.7
Whether has looked for work since arriving in Australia						
Has looked for work	31.7	15.8	17.2	39.3	56.5	130.3
Has not looked for work	27.7	23.2	33.0	73.1	97.8	200.0
Main reason for not actively looking for work						
Caring for children	23.0	15.2	23.6	45.3	20.8	90.7
Attending an educational institution	*10.9	*6.1	*4.8	20.4	95.9	127.9
Other (c)	26.7	17.6	21.8	46.8	40.4	115.8
<b>Total (d)</b>	<b>66.0</b>	<b>40.1</b>	<b>55.9</b>	<b>120.6</b>	<b>160.5</b>	<b>352.6</b>

\* estimate has a relative standard error of 25% to 50% and should be used with caution

.. not applicable

(a) Includes type of visa 'Status not determined'.

(b) Includes 'Humanitarian' and 'Other/n.f.d.'.

(c) Includes persons with other reasons and persons who had a job to go to.

(d) Includes country of birth 'Inadequately described', 'Applicant status not known' and whether has looked for work since arriving 'Could not be determined'.

	LEFT A JOB WHEN CAME TO LIVE IN AUSTRALIA				<i>Did not leave a job when came to live in Australia</i>	
	<i>Same major occupation group</i>	<i>Changed major occupation group</i>	<i>Total(b)</i>	<i>% changed major occupation group</i>	<i>Total(a)</i>	
	'000	'000	'000	%	'000	'000
MAIN APPLICANT FOR INITIAL VISA						
Labour force status						
Employed as at November 2010	140.7	139.9	285.5	49.0	92.7	380.2
Managers	17.5	21.5	40.8	52.7	*11.1	51.9
Professionals	65.7	26.6	94.7	28.1	20.5	115.2
Technicians and trades workers	33.8	16.7	50.5	33.1	*8.2	58.8
Community and personal service workers	*4.6	*16.1	20.8	77.4	8.1	29.9
Clerical and administrative workers	10.3	18.1	28.4	63.7	*14.1	42.5
Sales workers	*3.8	13.4	17.8	75.6	*9.4	27.1
Machinery operators and drivers	**1.9	12.3	14.2	86.8	*5.9	20.7
Labourers	*3.1	15.1	18.2	82.9	15.6	34.2
Unemployed	. .	. .	15.3	. .	14.7	30.0
Not in the labour force	. .	. .	63.3	. .	59.7	124.2
Type of visa on arrival to live in Australia						
Permanent visa	85.0	91.5	232.5	39.3	101.0	334.1
Skilled	54.0	44.6	110.8	40.2	12.3	123.1
Independent	24.0	27.4	57.9	47.3	*3.6	61.5
Other/n.f.d.	30.1	17.2	52.9	32.5	8.7	61.6
Family	28.3	40.5	107.5	37.7	66.7	174.7
Humanitarian	np	*5.2	*10.6	49.0	*20.6	31.3
Other/n.f.d.	np	**1.2	*3.6	**33.8	**1.3	*5.0
Temporary visa	55.6	48.4	131.5	36.8	66.1	199.5
Student	16.4	24.2	52.8	45.8	48.3	102.3
Other/n.f.d.	39.2	24.2	78.7	30.8	17.8	97.2
<i>Total(c)</i>	140.7	139.9	364.0	38.4	167.1	534.4

\* estimate has a relative standard error of 25% to 50% and should be used with caution

\*\* estimate has a relative standard error greater than 50% and is considered too unreliable for general use

. . not applicable

np not available for publication but included in totals where applicable, unless otherwise indicated

(a) Includes 'Did not know whether left a job overseas when came to live in Australia'.

(b) Includes those who were 'Unemployed' or 'Not in the labour force' as at November 2010 but had a job just before arrival, as well as people whose occupation before arrival could not be determined.

(c) Includes type of visa 'Status not determined'.

	LEFT A JOB WHEN CAME TO LIVE IN AUSTRALIA				<i>Did not leave a job when came to live in Australia</i>	
	<i>Same major occupation group</i>	<i>Changed major occupation group</i>	<i>Total(b)</i>	<i>% changed major occupation group</i>	<i>Total(a)</i>	
	'000	'000	'000	%	'000	'000
TOTAL (c)						
Labour force status						
Employed as at November 2010	166.6	183.8	355.9	51.6	129.8	487.9
Managers	20.6	26.9	49.4	54.5	14.2	63.6
Professionals	75.5	30.4	108.4	28.1	25.4	133.8
Technicians and trades workers	36.7	20.7	57.5	36.1	10.6	68.2
Community and personal service workers	*6.0	24.1	30.3	79.8	14.9	46.1
Clerical and administrative workers	16.9	28.0	44.9	62.5	20.7	65.6
Sales workers	*4.7	16.8	22.0	76.5	16.0	38.1
Machinery operators and drivers	**1.9	16.2	18.1	89.6	*5.9	24.6
Labourers	*4.2	20.5	25.4	80.8	22.1	47.9
Unemployed	..	..	23.3	..	21.8	45.1
Not in the labour force	..	..	85.6	..	99.8	186.5
Type of visa on arrival to live in Australia						
Permanent visa	104.7	126.0	310.1	40.6	168.6	479.3
Skilled	71.0	73.4	171.4	42.8	51.9	223.3
Independent	34.0	40.2	89.3	45.0	19.4	108.7
Other/n.f.d.	37.0	33.1	82.0	40.4	32.6	114.6
Family	30.0	44.1	115.3	38.2	76.6	192.5
Humanitarian	np	*7.0	17.6	39.6	37.5	55.2
Other/n.f.d.	np	*1.5	*5.8	*26.2	*2.5	*8.3
Temporary visa	61.8	57.9	154.8	37.4	82.3	239.0
Student	17.9	26.4	58.6	45.0	50.0	109.8
Other/n.f.d.	43.9	31.5	96.2	32.8	32.3	129.2
<b>Total(d)</b>	<b>166.6</b>	<b>183.8</b>	<b>464.8</b>	<b>39.5</b>	<b>251.4</b>	<b>719.6</b>

\* estimate has a relative standard error of 25% to 50% and should be used with caution

\*\* estimate has a relative standard error greater than 50% and is considered too unreliable for general use

.. not applicable

np not available for publication but included in totals where applicable, unless otherwise indicated

(a) Includes 'Did not know whether left a job overseas when came to live in Australia'.

(b) Includes those who were 'Unemployed' or 'Not in the labour force' as at November 2010 but had a job just before arrival, as well as people whose occupation before arrival could not be determined.

(c) Includes 'Other applicant' and 'Applicant status not known'.

(d) Includes type of visa 'Status not determined'.

	HAS HAD A JOB SINCE ARRIVING IN AUSTRALIA		HAS NOT HAD A JOB SINCE ARRIVING IN AUSTRALIA			
	Currently employed	Total	Has looked for a job (b)		Total (c)	Total (a)
			Has not looked for a job			
	'000	'000	'000	'000	'000	'000
.....						
Sex						
Males	267.7	296.9	8.2	16.5	28.3	325.8
Females	220.2	276.3	23.2	84.2	117.4	393.8
Age group on arrival						
15–19	28.0	40.6	**2.9	12.2	15.6	56.7
20–24	84.0	101.3	8.6	18.5	27.1	128.4
25–34	214.4	248.9	12.4	31.4	43.8	292.7
35–44	130.3	144.9	*6.2	21.5	28.8	173.7
45 and over	31.2	37.6	**1.4	17.2	30.4	68.0
Year of arrival						
2001–2002	100.2	114.7	*3.3	10.6	16.8	131.5
2003–2004	107.4	124.5	**1.5	12.6	18.4	143.5
2005–2006	112.5	141.5	*7.1	18.1	28.3	169.8
2007	52.1	62.8	*5.0	9.7	15.8	78.6
2008	60.4	68.3	*3.2	15.0	19.7	88.0
2009	40.2	45.5	*5.1	20.5	26.0	71.5
2010 to survey date	15.0	15.9	*6.3	*14.2	20.7	36.6
Country of birth						
Main English-speaking countries	138.3	152.5	*3.3	10.9	17.5	170.1
Other than main English-speaking countries	348.8	419.9	27.4	89.9	127.5	548.1
Type of visa on arrival to live in Australia (d)						
Permanent visa	306.7	357.7	26.5	83.0	121.6	479.3
Skilled	172.2	191.9	*7.8	20.8	31.4	223.3
Family	110.2	133.4	12.8	39.9	59.1	192.5
Humanitarian	19.6	26.7	*4.4	np	28.6	55.2
Other/n.f.d.	*4.6	*5.8	**1.5	np	*2.5	*8.3
Temporary visa	179.9	214.3	*4.9	17.8	24.1	239.0
Student	84.7	104.4	np	*4.9	*5.4	109.8
Other/n.f.d.	95.2	109.9	np	12.9	18.6	129.2
Type of visa as at November 2010 (d)						
Australian citizen	225.1	265.0	10.0	27.7	43.0	308.7
Permanent visa	262.8	308.2	21.4	73.1	102.6	410.9
Skilled	134.1	152.5	*7.1	23.2	31.5	184.0
Family	96.9	115.5	9.8	33.0	48.4	163.9
Humanitarian	*10.0	*13.7	**2.5	*15.5	*18.5	32.3
Other/n.f.d.	21.7	26.5	**2.1	**1.4	*4.2	30.7
Temporary visa	..	..	..	..	..	..

* estimate has a relative standard error of 25% to 50% and should be used with caution	(a) Includes 'Could not determine whether has had job since arriving in Australia'.
** estimate has a relative standard error greater than 50% and is considered too unreliable for general use	(b) Includes persons currently unemployed as well as persons not in the labour force who have looked for a job.
.. not applicable	(c) Includes 'Did not know whether has looked for job since arrival'.
np not available for publication but included in totals where applicable, unless otherwise indicated	(d) Refers to type of visa of main applicant. His/her spouse and dependants may also be included in that visa type.



	HAS HAD A JOB SINCE ARRIVING IN AUSTRALIA		HAS NOT HAD A JOB SINCE ARRIVING IN AUSTRALIA			
	Currently employed	Total	Has looked for a job(b)		Total(c)	Total(a)
			Has not looked for a job			
	'000	'000	'000	'000	'000	'000
.....						
All difficulties finding first job held in Australia						
Language difficulties	49.0	64.9	..	..	..	64.9
Lack of Australian work experience/references	105.5	127.2	..	..	..	127.2
Lack of local contacts/networks	39.3	46.3	..	..	..	46.3
Skills or qualifications not recognised	25.8	29.0	..	..	..	29.0
Ethnic, cultural or religious barriers	*8.3	9.6	..	..	..	9.6
Don't know how or where to apply for jobs	12.3	16.0	..	..	..	16.0
Visa type/restrictions	12.0	14.1	..	..	..	14.1
No jobs or vacancies in locality/line of work/at all	23.4	29.6	..	..	..	29.6
Transport difficulties/No driver's license	9.8	13.8	..	..	..	13.8
Other difficulty	*4.0	9.2	..	..	..	9.2
Total experienced difficulty finding first job(d)	160.7	199.3	..	..	..	199.3
Did not experience difficulty finding first job	270.0	314.5	..	..	..	314.5
Already had first job arranged before arriving in Australia	52.9	54.6	..	..	..	54.6
All sources of help finding first job held in Australia						
Centrelink or Job Network agency	52.9	61.9	..	..	..	61.9
Migrant association or refugee settlement organisation	*10.5	*14.6	..	..	..	*14.6
Church or community group	*6.3	*8.3	..	..	..	*8.3
Educational institution	13.7	16.6	..	..	..	16.6
Friends or family	137.2	172.1	..	..	..	172.1
Other source	10.3	11.2	..	..	..	11.2
Total received help finding first job(e)	204.9	251.4	..	..	..	251.4
Did not receive help finding first job	229.1	265.7	..	..	..	265.7
Already had first job arranged before arriving in Australia	52.9	54.6	..	..	..	54.6
<b>Total(f)</b>	<b>487.9</b>	<b>573.3</b>	<b>31.4</b>	<b>100.8</b>	<b>145.7</b>	<b>719.6</b>

\* estimate has a relative standard error of 25% to 50% and should be used with caution

.. not applicable

(a) Includes 'Could not determine whether has had job since arriving in Australia'.

(b) Includes persons currently unemployed as well as persons not in the labour force who have looked for a job.

(c) Includes 'Did not know whether has looked for job since arrival'.

(d) Components may not add to totals as some persons may have reported more than one difficulty.

(e) Components may not add to totals as some persons may have reported more than one source of help.

(f) Includes type of visa 'Status not determined', country of birth 'Inadequately described', whether experienced difficulty 'Could not be determined' and whether received help 'Could not be determined'.

# RECENT MIGRANTS WHO HAVE HAD A JOB SINCE ARRIVAL, Selected characteristics of first job held in Australia—By whether obtained non-school qualification before arrival

## OBTAINED A NON-SCHOOL QUALIFICATION BEFORE ARRIVAL

	<i>Used highest non-school qualification in first job</i>	<i>Did not use highest qualification in first job - Has tried to find work more suited to qualification</i>	<i>Did not use highest qualification in first job - Has not tried to find work more suited to qualification</i>	<i>Total(a)</i>	<i>Did not obtain a non-school qualification before arrival</i>	<i>Total</i>
	'000	'000	'000	'000	'000	'000
<b>Occupation in first job held in Australia</b>						
Managers	25.2	*2.7	*9.4	37.2	*11.4	49.2
Professionals	91.2	8.4	12.3	111.9	16.0	127.9
Technicians and trades workers	36.8	*6.0	9.3	52.0	16.0	68.0
Community and personal service workers	9.1	14.7	21.7	45.4	19.7	65.1
Clerical and administrative workers	20.1	13.9	14.1	48.0	21.4	69.4
Sales workers	10.7	11.5	13.9	36.1	26.0	62.1
Machinery operators and drivers	*4.3	*6.5	*6.0	16.8	*7.3	24.7
Labourers	*4.5	27.4	17.9	49.9	52.5	102.4
<b>Whether usually worked full time or part time in first job held in Australia</b>						
Worked full time in first job	162.9	47.0	54.0	263.9	78.9	343.4
Worked part time in first job	39.6	44.2	51.3	135.0	91.3	226.9
<b>Number of jobs held since arriving in Australia</b>						
1 job	97.0	19.6	36.2	152.8	71.4	224.8
2 jobs	49.8	25.1	27.9	102.8	49.9	153.3
3 jobs	28.9	23.9	17.5	70.3	23.6	94.6
4 or more jobs	27.4	22.9	23.6	73.9	26.0	99.9
<b>Length of time spent looking for first job held in Australia</b>						
Already had job arranged prior to arrival in						
Australia	37.5	*1.2	*3.9	42.7	11.9	54.6
One month or less	58.4	15.9	27.2	101.5	28.6	130.1
Two to three months	41.6	21.7	24.9	88.2	29.5	118.4
Four to six months	29.2	17.7	15.3	62.1	24.7	86.8
Seven to twelve months	15.2	16.9	13.6	45.7	19.5	65.2
More than twelve months	20.9	18.1	18.7	57.7	52.8	111.0
<b>All difficulties finding first job held in Australia</b>						
Language difficulties	7.7	20.9	*11.1	39.7	24.6	64.9
Lack of Australian work experience/references	36.5	38.8	16.4	91.7	34.3	127.2
Lack of local contacts/networks	10.6	17.0	*7.1	34.7	11.6	46.3
Skills or qualifications not recognised	*7.0	10.3	*5.0	22.3	*6.7	29.0
No jobs or vacancies in locality/line of work/at all	10.3	*7.5	*3.7	21.5	*8.1	29.6
Other difficulty	*10.4	15.1	11.6	37.2	18.6	55.8
<i>Total experienced difficulty finding first job(b)</i>	55.0	54.1	33.2	142.2	55.9	199.3
Did not experience difficulty finding first job	109.3	35.6	67.9	212.8	101.7	314.5
Already had job arranged prior to arrival in						
Australia	37.5	*1.2	*3.9	42.7	11.9	54.6
<b>All sources of help finding first job held in Australia</b>						
Centrelink or Job Network Agency	18.9	*11.2	*9.0	39.2	22.2	61.9
Educational institution	*9.0	*3.1	*2.1	14.2	*2.4	16.6
Friends or family	36.5	31.3	32.0	99.8	71.6	172.1
Other source	11.8	*3.5	*6.4	21.7	*10.1	31.8
<i>Total received help finding first job(c)</i>	69.1	43.8	43.2	156.1	94.1	251.4
Did not receive help finding first job	96.4	46.5	57.6	200.5	65.2	265.7
Already had job arranged prior to arrival in						
Australia	37.5	*1.2	*3.9	42.7	11.9	54.6
<b>Total(d)</b>	<b>203.0</b>	<b>91.6</b>	<b>105.3</b>	<b>399.8</b>	<b>171.6</b>	<b>573.3</b>

\* estimate has a relative standard error of 25% to 50% and should be used with caution

(a) Includes 'Could not determine whether used highest non-school qualification obtained before arrival in first job held in Australia'.

(b) Components may not add to totals as some persons may have reported more than one difficulty.

(c) Components may not add to totals as some persons may have reported more than one source of help.

(d) Includes number of jobs 'Not determined', occupation in first job 'Inadequately described', whether experienced difficulty 'Could not be determined' and whether received help 'Could not be determined'.

RECENT MIGRANTS WITH A NON-SCHOOL QUALIFICATION ON ARRIVAL, Selected characteristics—By level of highest non-school qualification obtained before arrival

		Bachelor degree or higher	Advanced Diploma/Diploma	Certificate	Total(a)
OVERSEAS QUALIFICATION RECOGNISED IN AUSTRALIA					
Age group on arrival (years)					
15–19	'000	—	—	np	np
20–24	'000	16.2	*1.9	np	19.2
25–34	'000	61.6	*6.9	*5.4	76.3
35–44	'000	30.1	6.7	7.6	46.3
45 and over	'000	*5.5	**1.6	*2.4	np
Country of birth					
Main English-speaking countries	'000	30.2	7.1	9.8	49.7
Other than main English-speaking countries	'000	83.1	9.5	7.6	103.0
Main field of non school qualification obtained before arrival					
Natural and physical sciences	'000	*8.5	—	—	*8.8
Information technology	'000	*9.4	np	—	*10.5
Engineering and related technologies	'000	24.6	*4.9	10.9	41.3
Architecture and building	'000	*2.5	—	*3.0	*5.5
Health	'000	16.0	*4.8	—	21.3
Education	'000	*5.9	**1.4	—	8.2
Management and commerce	'000	26.0	*2.3	np	28.3
Society and culture	'000	16.6	**1.0	—	17.6
Food, hospitality and personal services	'000	—	np	*2.8	*3.9
Labour force status					
Labour force	'000	103.8	16.0	np	142.1
Employed	'000	96.2	16.0	np	133.7
Unemployed	'000	7.5	—	np	8.3
Not in the labour force	'000	9.6	**1.2	np	11.2
Unemployment rate	%	7.2	—	np	5.9
Labour force participation rate	%	91.5	93.2	np	92.7
Type of visa on arrival to live in Australia(b)					
Permanent visa	'000	79.0	10.8	12.2	104.7
Skilled	'000	56.0	7.4	9.0	74.7
Family	'000	20.3	**1.3	*2.3	24.1
Humanitarian	'000	**1.8	**1.1	np	*3.3
Other/n.f.d.	'000	**1.0	**0.9	np	**2.6
Temporary visa	'000	34.4	*6.4	5.3	48.5
Student	'000	16.4	**1.4	np	18.7
Other/n.f.d.	'000	18.0	*5.0	np	29.9
Applicant status on arrival to live in Australia					
Main applicant	'000	95.6	13.0	16.1	129.8
Other applicant	'000	17.0	*4.2	**1.3	22.7
Total(c)	'000	113.4	17.2	17.4	153.3

\* estimate has a relative standard error of 25% to 50% and should be used with caution

\*\* estimate has a relative standard error greater than 50% and is considered too unreliable for general use

— nil or rounded to zero (including null cells)

np not available for publication but included in totals where applicable, unless otherwise indicated

(a) Includes 'Level not determined'.

(b) Refers to type of visa of main applicant. His/her spouse and dependants may also be included in that visa type.

(c) Includes type of visa 'Status not determined', country of birth 'Inadequately described' and qualification fields of 'Agriculture, environmental and related studies', 'Creative arts', 'Mixed field programmes' and 'Field not determined'.

# RECENT MIGRANTS WITH A NON-SCHOOL QUALIFICATION ON ARRIVAL, Selected characteristics—By level of highest non-school qualification obtained before arrival

*continued*

		Bachelor degree or higher	Advanced Diploma/Diploma	Certificate	Total(a)
DID NOT APPLY TO HAVE QUALIFICATION RECOGNISED IN AUSTRALIA OR OVERSEAS QUALIFICATION NOT RECOGNISED IN AUSTRALIA					
Age group on arrival (years)					
15–19	'000	np	np	np	*2.6
20–24	'000	34.9	10.2	np	50.7
25–34	'000	92.5	27.5	10.7	135.6
35–44	'000	48.4	17.7	14.6	82.8
45 and over	'000	np	np	6.2	25.7
Country of birth					
Main English-speaking countries	'000	38.0	15.8	14.0	70.5
Other than main English-speaking countries	'000	151.2	46.9	22.1	226.4
Main field of non school qualification obtained before arrival					
Natural and physical sciences	'000	14.5	**1.3	—	15.8
Information technology	'000	12.2	*5.3	**1.6	19.4
Engineering and related technologies	'000	18.5	8.5	12.9	40.1
Architecture and building	'000	*5.5	**2.1	*5.6	13.2
Health	'000	17.6	*3.5	np	23.1
Education	'000	12.3	**1.6	—	13.9
Management and commerce	'000	60.4	26.4	*6.0	95.9
Society and culture	'000	37.9	*2.7	np	41.6
Food, hospitality and personal services	'000	np	*4.5	7.1	13.6
Labour force status					
Labour force	'000	141.2	49.1	28.8	224.0
Employed	'000	130.8	46.8	27.3	209.2
Unemployed	'000	10.5	*2.4	**1.5	14.9
Not in the labour force	'000	48.4	13.6	*7.3	73.3
Unemployment rate	%	7.4	*4.8	**5.2	6.6
Labour force participation rate	%	74.5	78.3	79.8	75.3
Type of visa on arrival to live in Australia(b)					
Permanent visa	'000	116.3	38.4	27.1	187.5
Skilled	'000	55.0	15.7	16.3	87.9
Family	'000	56.3	21.2	9.6	90.6
Humanitarian	'000	*3.3	np	*1.2	*6.9
Other/n.f.d.	'000	*1.7	np	—	*2.0
Temporary visa	'000	73.4	24.4	9.0	109.9
Student	'000	42.0	*9.6	**1.4	54.7
Other/n.f.d.	'000	31.3	14.8	7.6	55.1
Applicant status on arrival to live in Australia					
Main applicant	'000	146.3	46.2	28.1	228.8
Other applicant	'000	42.8	16.5	8.0	68.0
Total(c)	'000	189.7	62.7	36.1	297.3

\* estimate has a relative standard error of 25% to 50% and should be used with caution

\*\* estimate has a relative standard error greater than 50% and is considered too unreliable for general use

— nil or rounded to zero (including null cells)

np not available for publication but included in totals where applicable, unless otherwise indicated

(a) Includes 'Level not determined'.

(b) Refers to type of visa of main applicant. His/her spouse and dependants may also be included in that visa type.

(c) Includes type of visa 'Status not determined', country of birth 'Inadequately described' and qualification fields of 'Agriculture, environmental and related studies', 'Creative arts', 'Mixed field programmes' and 'Field not determined'.

RECENT MIGRANTS WITH A NON-SCHOOL QUALIFICATION ON ARRIVAL, Selected characteristics—By level of highest non-school qualification obtained before arrival

continued

		Bachelor degree or higher	Advanced Diploma/Diploma	Certificate	Total (a)
TOTAL (b)					
Age group on arrival (years)					
15–19	'000	np	np	**1.7	*4.5
20–24	'000	53.5	12.3	*4.9	72.5
25–34	'000	159.8	35.7	16.6	219.9
35–44	'000	80.9	24.4	23.0	132.4
45 and over	'000	np	np	9.0	36.1
Country of birth					
Main English-speaking countries	'000	69.3	22.9	24.0	121.5
Other than main English-speaking countries	'000	243.9	58.5	31.1	343.0
Main field of non school qualification obtained before arrival					
Natural and physical sciences	'000	24.2	**1.3	—	25.8
Information technology	'000	22.9	*6.2	**1.6	31.1
Engineering and related technologies	'000	43.6	13.4	25.2	83.3
Architecture and building	'000	*7.9	**2.1	8.7	18.7
Health	'000	34.2	8.3	np	45.0
Education	'000	18.2	*3.0	—	22.1
Management and commerce	'000	90.7	29.9	*6.4	130.0
Society and culture	'000	56.6	*3.7	np	61.4
Food, hospitality and personal services	'000	np	*5.8	9.9	17.7
Labour force status					
Labour force	'000	253.2	66.8	47.4	378.2
Employed	'000	233.4	64.4	45.4	353.2
Unemployed	'000	19.8	*2.4	*2.0	25.1
Not in the labour force	'000	60.4	15.1	*7.7	87.2
Unemployment rate	%	7.8	*3.5	*4.3	6.6
Labour force participation rate	%	80.7	81.5	86.0	81.3
Type of visa on arrival to live in Australia (c)					
Permanent visa	'000	203.9	50.0	40.3	303.4
Skilled	'000	116.5	24.0	25.5	169.8
Family	'000	79.1	22.5	12.2	117.7
Humanitarian	'000	*5.7	*2.3	*1.8	*11.2
Other/n.f.d.	'000	*2.7	**1.2	**0.8	*4.6
Temporary visa	'000	109.7	31.9	14.8	162.0
Student	'000	59.7	*11.3	**1.8	75.0
Other/n.f.d.	'000	49.9	20.6	13.0	87.0
Applicant status on arrival to live in Australia					
Main applicant	'000	250.8	60.8	45.6	371.1
Other applicant	'000	61.5	21.1	9.5	93.0
<b>Total (d)</b>	<b>'000</b>	<b>313.6</b>	<b>81.9</b>	<b>55.1</b>	<b>465.4</b>

\* estimate has a relative standard error of 25% to 50% and should be used with caution

\*\* estimate has a relative standard error greater than 50% and is considered too unreliable for general use

— nil or rounded to zero (including null cells)

np not available for publication but included in totals where applicable, unless otherwise indicated

(a) Includes 'Level not determined'.

(b) Includes 'Did not know if overseas qualification recognised in Australia' or 'Did not know whether had applied to have overseas qualification recognised in Australia'.

(c) Refers to type of visa of main applicant. His/her spouse and dependants may also be included in that visa type.

(d) Includes type of visa 'Status not determined', country of birth 'Inadequately described' and qualification fields of 'Agriculture, environmental and related studies', 'Creative arts', 'Mixed field programmes' and 'Field not determined'.

	Males	Females	Persons
	'000	'000	'000
Number of jobs held since arriving in Australia			
Has not had a job since arriving in Australia	*3.4	*3.9	*7.3
One job	34.8	15.3	50.2
Two jobs	16.3	*5.0	21.3
Three or more jobs	21.7	7.0	28.7
Labour force status			
Labour force	72.9	24.2	97.1
Employed	70.3	23.1	93.4
Full time	63.7	18.3	82.0
Part time	*6.7	*4.8	11.5
Unemployed	*2.6	**1.1	*3.7
Not in the labour force	*3.3	7.1	10.4
Occupation in current job(a)			
Managers	12.1	*3.9	16.0
Professionals	21.2	12.4	33.6
Technicians and trades workers	19.2	**1.0	20.2
Community and personal service workers	**1.5	**1.0	*2.5
Clerical and administrative workers	*4.1	**1.8	*5.9
Sales workers	*3.9	*1.7	*5.6
Machinery operators and drivers	np	np	*2.8
Labourers	np	np	*6.7
Whether current occupation is the same as nominated occupation(a)			
Current occupation group same as nominated occupation for current visa	29.5	11.9	41.4
Current occupation group different to nominated occupation for current visa	21.6	4.6	26.2
Could not be determined whether nominated occupation for current visa the same as current occupation	np	np	11.2
Did not nominate an occupation for current visa	*9.0	*5.6	14.6
Level of highest non-school qualification obtained before arrival			
Obtained a non-school qualification before arrival(b)	66.9	27.4	94.3
Bachelor degree or higher	37.0	20.7	57.6
Advanced diploma/Diploma	10.8	*4.5	15.3
Certificate	16.8	**0.9	17.7
Did not obtain a non-school qualification before arrival	9.3	*3.9	13.1
Whether uses highest non-school qualification in current job(a)			
Uses highest non-school qualification obtained before arrival in current job	43.2	13.9	57.1
Does not use highest non-school qualification obtained before arrival in current job	18.7	*7.5	26.1
Did not obtain a non-school qualification before arrival	*8.4	**1.8	10.2
Whether tried to find work more suited to highest non-school qualification obtained before arrival while working in current job(a)			
Tried to find work more suited to highest non-school qualification since working in current job	6.4	*3.4	9.8
Did not try to find work more suited to highest non-school qualification since working in current job	12.3	*4.0	16.4
Used highest non-school qualification in current job	43.2	13.9	57.1
Did not obtain a non-school qualification before arrival	*8.4	**1.8	10.2
Not currently employed	*5.8	8.2	14.1
<b>Total</b>	<b>76.2</b>	<b>31.3</b>	<b>107.5</b>
* estimate has a relative standard error of 25% to 50% and should be used with caution	np	not available for publication but included in totals where applicable, unless otherwise indicated	
** estimate has a relative standard error greater than 50% and is considered too unreliable for general use	(a)	Only applies to those currently employed.	
	(b)	Includes 'Level not determined'.	

		PROFICIENCY IN SPOKEN ENGLISH WHEN FIRST CAME TO LIVE IN AUSTRALIA					<i>English main language spoken when first came to live in Australia</i>	
		<i>Very well</i>	<i>Well</i>	<i>Not well</i>	<i>Not at all</i>	<i>Total(a)</i>		<i>Total</i>
.....								
Sex								
Males	'000	24.8	66.5	54.8	23.8	169.9	69.2	239.1
Females	'000	34.4	69.5	77.4	32.0	213.8	95.2	309.0
Country of birth								
Oceania and Antarctica	'000	—	*3.7	—	—	*5.5	*10.7	*16.1
North-West Europe	'000	*7.1	*5.2	*1.1	—	13.4	8.9	22.3
Southern and Eastern Europe	'000	*5.5	*8.6	*9.9	*10.0	34.1	*6.3	40.4
North Africa and the Middle East	'000	*7.3	12.7	16.3	*12.9	49.2	*4.4	53.6
South-East Asia	'000	*9.7	22.1	20.6	*8.8	61.7	41.1	102.8
North-East Asia	'000	*3.9	32.7	51.6	*13.3	101.4	8.8	110.2
Southern and Central Asia	'000	22.3	45.7	21.1	*5.7	94.7	61.6	156.3
Americas	'000	**1.5	**1.9	*3.5	**1.9	8.7	*3.4	12.1
Sub-Saharan Africa	'000	—	*3.4	*8.2	*2.7	*15.0	19.2	34.2
Year of arrival								
2001–2002	'000	*10.8	23.0	27.5	9.7	71.5	28.5	100.0
2003–2004	'000	7.3	34.6	22.2	11.5	75.7	36.0	111.6
2005–2006	'000	17.7	34.4	26.0	*13.3	91.4	42.3	133.7
2007–2008	'000	13.9	27.4	32.0	11.9	85.2	33.1	118.3
2009 to survey date	'000	*9.5	16.6	24.5	9.3	59.9	24.6	84.5
Labour force status								
Labour force	'000	48.2	101.0	83.8	27.1	260.1	126.5	386.7
Employed	'000	43.6	91.2	74.9	22.8	232.4	116.4	348.8
Unemployed	'000	*4.7	9.8	8.9	*4.4	27.7	10.2	37.9
Not in the labour force	'000	11.0	35.0	48.4	28.7	123.5	37.9	161.4
Unemployment rate	%	*9.7	9.7	10.6	*16.1	10.7	8.0	9.8
Labour force participation rate	%	81.4	74.2	63.4	48.6	67.8	76.9	70.6
Applicant status on arrival to live in Australia								
Main applicant	'000	46.4	107.8	96.9	39.1	290.7	123.1	413.8
Other applicant	'000	12.3	28.2	35.3	15.5	91.2	41.0	132.1
Type of visa on arrival to live in Australia(b)								
Permanent visa	'000	40.5	85.9	86.4	48.0	261.3	113.9	375.2
Skilled	'000	18.7	38.2	28.3	*7.9	93.1	60.3	153.4
Family	'000	17.8	37.8	36.5	21.8	114.3	48.9	163.2
Humanitarian	'000	*3.0	9.4	20.9	*17.9	51.2	*3.5	54.7
Other/n.f.d.	'000	**1.1	**0.5	**0.7	**0.4	*2.7	**1.2	*3.9
Temporary visa	'000	18.7	49.2	45.9	7.7	121.5	50.1	171.6
Student	'000	11.5	32.3	29.5	*1.7	75.0	27.5	102.5
Other/n.f.d.	'000	*7.2	16.9	16.4	*6.0	46.5	22.6	69.1
<b>Total(c)</b>	<b>'000</b>	<b>59.2</b>	<b>136.0</b>	<b>132.2</b>	<b>55.8</b>	<b>383.6</b>	<b>164.4</b>	<b>548.1</b>

\* estimate has a relative standard error of 25% to 50% and should be used with caution

\*\* estimate has a relative standard error greater than 50% and is considered too unreliable for general use

— nil or rounded to zero (including null cells)

(a) Includes 'Proficiency not determined'.

(b) Refers to type of visa of main applicant. His/her spouse and dependents may also be included in that visa type.

(c) Includes type of visa 'Status not determined', 'Applicant status not known' and country of birth 'Inadequately described'.

		CURRENT PROFICIENCY IN SPOKEN ENGLISH					English mainly spoken at home	Total
		Very well	Well	Not well	Not at all	Total(a)		
<b>Sex</b>								
Males	'000	51.7	73.1	35.1	*4.3	164.2	74.9	239.1
Females	'000	45.0	79.5	49.2	7.5	182.5	126.6	309.0
<b>Country of birth</b>								
Oceania and Antarctica	'000	*4.2	np	—	—	*5.3	*10.8	*16.1
North-West Europe	'000	*4.3	**1.7	np	—	*6.2	16.1	22.3
Southern and Eastern Europe	'000	*7.9	*7.3	*7.5	**1.4	24.1	16.3	40.4
North Africa and the Middle East	'000	11.0	17.7	11.6	**2.1	42.4	11.2	53.6
South-East Asia	'000	15.0	18.8	13.5	**2.6	49.9	52.8	102.8
North-East Asia	'000	10.1	50.0	28.5	*4.2	92.7	17.5	110.2
Southern and Central Asia	'000	39.6	48.6	11.0	**1.4	101.7	54.6	156.3
Americas	'000	*2.8	**1.7	*2.8	—	*7.4	*4.7	12.1
Sub-Saharan Africa	'000	*2.0	*5.7	*9.1	—	*16.8	17.4	34.2
<b>Year of arrival</b>								
2001–2002	'000	*19.6	28.5	*9.7	np	58.7	41.3	100.0
2003–2004	'000	20.4	36.3	9.7	np	69.9	41.7	111.6
2005–2006	'000	30.7	32.1	20.9	**1.4	85.6	48.1	133.7
2007–2008	'000	17.3	32.6	22.4	**1.3	73.6	44.7	118.3
2009 to survey date	'000	*8.7	23.3	21.6	*4.5	58.8	25.7	84.5
<b>Labour force status</b>								
Labour force	'000	80.2	109.7	37.0	**3.1	231.2	155.4	386.7
Employed	'000	70.0	98.5	31.1	**3.1	204.0	144.8	348.8
Unemployed	'000	10.2	11.2	*5.9	—	27.2	10.7	37.9
Not in the labour force	'000	16.5	42.9	47.2	8.7	115.4	46.0	161.4
Unemployment rate	%	12.7	10.2	*15.8	—	11.8	6.9	9.8
Labour force participation rate	%	82.9	71.9	43.9	**26.0	66.7	77.2	70.6
<b>Applicant status on arrival to live in Australia</b>								
Main applicant	'000	73.9	111.9	62.8	*6.2	256.0	157.8	413.8
Other applicant	'000	22.8	40.1	20.9	*5.6	89.4	42.8	132.1
<b>Type of visa on arrival to live in Australia(b)</b>								
Permanent visa	'000	60.6	99.6	67.5	11.7	240.2	135.0	375.2
Skilled	'000	30.2	46.0	13.0	*4.3	93.5	59.9	153.4
Family	'000	23.1	35.9	30.6	*4.3	94.7	68.5	163.2
Humanitarian	'000	*7.3	17.2	23.1	*2.7	50.4	*4.3	54.7
Other/n.f.d.	'000	—	*0.5	**0.7	**0.4	*1.6	**2.3	*3.9
Temporary visa	'000	36.1	52.2	16.8	—	105.6	66.0	171.6
Student	'000	25.3	35.5	*6.7	—	68.1	34.4	102.5
Other/n.f.d.	'000	10.8	16.6	10.0	—	37.5	31.6	69.1
<b>Total(c)</b>	<b>'000</b>	<b>96.7</b>	<b>152.6</b>	<b>84.2</b>	<b>11.7</b>	<b>346.6</b>	<b>201.5</b>	<b>548.1</b>

\* estimate has a relative standard error of 25% to 50% and should be used with caution  
\*\* estimate has a relative standard error greater than 50% and is considered too unreliable for general use  
— nil or rounded to zero (including null cells)  
np not available for publication but included in totals where applicable, unless otherwise indicated

(a) Includes 'Proficiency not determined'.  
(b) Refers to type of visa of main applicant. His/her spouse and dependents may also be included in that visa type.  
(c) Includes visa type 'Status not determined', 'Applicant status not known' and country of birth 'Inadequately described'.



	NSW	Vic.	Qld	SA	WA	Tas.	NT	ACT	Aust.
	'000	'000	'000	'000	'000	'000	'000	'000	'000
MALES									
All persons aged 15 years and over	2 831.9	2 213.9	1 740.5	646.1	926.4	197.7	72.7	138.2	8 767.4
Recent migrants and temporary residents	196.5	170.7	81.4	36.3	83.9	2.4	3.5	5.9	580.5
Recent migrants and temporary residents without a non-school qualification on arrival	73.4	65.2	28.1	13.4	28.0	*0.7	*0.8	*1.3	210.9
Recent migrants and temporary residents who are not in the labour force	36.7	31.1	17.0	8.5	9.9	np	np	**0.7	104.4
Recent migrants	115.9	85.7	44.0	24.1	48.7	*1.6	2.3	3.6	325.8
Recent migrants who have had a job since arrival	105.5	77.1	40.8	19.9	46.7	*1.6	2.3	3.1	296.9
Recent migrants with a non-school qualification on arrival	76.1	58.2	28.7	15.7	34.4	*1.1	1.8	*2.7	218.7
Recent migrant main applicants with permanent skilled visa as at November 2010	18.9	19.4	*12.3	7.1	16.3	np	np	*1.4	76.2
Recent migrants born in other than main English-speaking countries	96.9	69.3	26.5	16.6	24.8	*1.3	*1.2	2.4	239.1
FEMALES									
All persons aged 15 years and over	2 927.2	2 259.6	1 769.7	667.5	900.2	204.7	70.5	145.5	8 945.0
Recent migrants and temporary residents	224.3	175.7	89.6	41.6	78.9	4.3	4.9	9.1	628.4
Recent migrants and temporary residents without a non-school qualification on arrival	84.7	72.1	30.8	17.6	29.8	*1.9	*2.1	4.6	243.7
Recent migrants and temporary residents who are not in the labour force	85.2	74.2	35.6	17.3	30.6	np	np	2.8	248.2
Recent migrants	138.0	105.7	52.6	29.6	55.1	*2.7	3.5	6.5	393.8
Recent migrants who have had a job since arrival	97.5	69.9	36.2	20.7	42.5	*2.4	2.9	4.2	276.3
Recent migrants with a non-school qualification on arrival	90.1	65.7	34.5	17.8	32.3	*1.7	1.8	*2.7	246.8
Recent migrant main applicants with permanent skilled visa as at November 2010	*8.6	11.3	**2.0	4.1	*3.5	np	np	**0.8	31.3
Recent migrants born in other than main English-speaking countries	117.4	90.7	39.3	22.5	29.8	*1.5	*3.0	4.8	309.0
PERSONS									
All persons aged 15 years and over	5 759.1	4 473.5	3 510.2	1 313.6	1 826.6	402.4	143.2	283.7	17 712.4
Recent migrants and temporary residents	420.9	346.4	171.0	78.0	162.8	6.6	8.3	15.0	1 209.0
Recent migrants and temporary residents without a non-school qualification on arrival	158.1	137.3	58.9	31.0	57.8	*2.6	*2.8	6.0	454.6
Recent migrants and temporary residents who are not in the labour force	121.9	105.3	52.5	25.8	40.5	*1.7	*1.5	*3.4	352.6
Recent migrants	253.9	191.4	96.6	53.8	103.8	4.2	5.8	10.0	719.6
Recent migrants who have had a job since arrival	203.0	147.1	77.0	40.5	89.1	4.0	5.2	7.3	573.3
Recent migrants with a non-school qualification on arrival	166.2	123.9	63.2	33.5	66.8	*2.8	3.7	5.4	465.4
Recent migrant main applicants with permanent skilled visa as at November 2010	27.5	30.8	14.3	11.3	19.8	*0.9	*0.9	*2.1	107.5
Recent migrants born in other than main English-speaking countries	214.3	160.0	65.8	39.1	54.6	*2.9	4.2	7.2	548.1

\* estimate has a relative standard error of 25% to 50% and should be used with caution

\*\* estimate has a relative standard error greater than 50% and is considered too unreliable for general use

np not available for publication but included in totals where applicable, unless otherwise indicated

## EXPLANATORY NOTES

### INTRODUCTION

**1** The statistics in this publication were compiled from data collected in the Characteristics of Recent Migrants Survey, conducted throughout Australia in November 2010 as part of the Monthly Population Survey (MPS). The MPS consists of the Labour Force Survey (LFS) and supplementary surveys.

**2** The publication *Labour Force, Australia* (cat. no. 6202.0) contains information about survey design, sample redesign, scope, coverage and population benchmarks relevant to the monthly LFS, which also apply to supplementary surveys. It also contains definitions of demographic and labour force characteristics, and information about interviewing which are relevant to both the monthly LFS and supplementary surveys.

### SCOPE

**3** The scope of the survey is restricted to people aged 15 years and over who were usual residents of private dwellings and excludes:

- members of the permanent defence forces;
- certain diplomatic personnel of overseas governments, customarily excluded from the Census of Population and Housing and estimated resident populations;
- overseas residents in Australia;
- members of non-Australian defence forces (and their dependants).

**4** In 2010, this survey was conducted in both urban and rural areas in all states and territories, but excluded people living in Indigenous communities in very remote parts of Australia. Previous cycles of this survey have excluded all persons living in very remote areas.

### COVERAGE

**5** The estimates in this publication relate to persons covered by the survey in November 2010. In the LFS, coverage rules are applied which aim to ensure that each person is associated with only one dwelling, and hence has only one chance of selection in the survey. See *Labour Force, Australia* (cat. no. 6202.0) for more details.

### DATA COLLECTION

**6** Information was collected through interviews conducted over a two-week period during November 2010. Interviews were mainly conducted over the phone with some conducted face-to-face. Information was obtained from one responsible adult present on each visa application in the household. For example, consider a household with three usual residents where two were listed together on one visa application and the other person listed on a separate visa application. In this case, two people in the household would have provided information, one for each visa application.

**7** All interviews were conducted using computer assisted interviewing (CAI).

### SAMPLE SIZE

**8** Supplementary surveys are not conducted using the full LFS sample. The sample for the Characteristics of Recent Migrants Survey was seven eighths of the LFS sample.

**9** Approximately 96% of selected households were fully responding to the Characteristics of Recent Migrants Survey, with 2,650 complete interviews obtained from recent migrants and temporary residents.

### ESTIMATION METHOD

**10** The estimates in this publication are obtained by assigning a 'weight' to each sample respondent. The weight is a value which indicates how many population units are represented by the sample respondent.

**11** The first step in calculating weights for each unit is to assign an initial weight, which is the final weight from the LFS multiplied by 8/7, to account for using seven eighths of the full LFS sample. The initial weights are then calibrated to align with estimates of the population, referred to as benchmarks. This calibration process ensures that the survey weights conform to the independently estimated distribution of the population described by the benchmarks rather than to the distribution within the sample itself. Calibration to population benchmarks helps to compensate for over- or

## EXPLANATORY NOTES *continued*

### ESTIMATION METHOD *continued*

under-enumeration of particular categories of persons which may occur due to the random effects of sampling or non-response (see paragraph 22).

#### *Population benchmarks*

**12** The population included in the benchmark totals correspond to the scope of the survey. For this survey two sets of benchmarks were used, and were derived from the November 2010 LFS. The first set of benchmarks specified the population distribution in designated categories of state or territory of usual residence by area of usual residence by sex by age group. The second set in designated categories of state or territory of usual residence by migrant status.

#### *Estimation*

**13** Survey estimates of counts of persons are obtained by summing the weights of persons with the characteristic of interest.

### COMPARABILITY OF TIME SERIES

**14** Labour Force Status and Other Characteristics of Migrants Surveys conducted up to and including November 1996 were restricted to migrants who arrived in Australia after 1970, were aged 18 years and over on arrival, and had obtained permanent Australian resident status. For November 1999, the survey was restricted to migrants who arrived in Australia after 1980, were aged 18 years and over on arrival, and had obtained permanent Australian resident status. For November 2004, the survey included migrants aged 15 years and over on arrival, who arrived in Australia after 1984 who had obtained permanent Australian resident status, as well as people who were temporary residents of Australia for 12 months or more. For November 2007 and November 2010, the surveys have included migrants who arrived in Australia in the last 10 years (since 1997 and 2000 respectively), were aged 15 years and over on arrival, who had obtained permanent Australian resident status, as well as people who were temporary residents of Australia for 12 months or more. In 2007, persons born in New Zealand, those holding New Zealand citizenship and those who held Australian citizenship prior to their arrival in Australia were excluded. In 2010, persons holding New Zealand citizenship and those who held Australian citizenship prior to their arrival in Australia were excluded, while other persons born in New Zealand were included.

**15** Some new data items were collected in November 2010, including: whether would have preferred to have worked longer hours in first job in Australia; main reason not actively looking for work; and main language spoken on arrival. Data items related to the last visa held before becoming an Australian Citizen, length of time spent overseas since most recent arrival, highest year of school completed and whether working full time or part time just before arrival were not collected in November 2010.

**16** The label 'Type of visa on most recent arrival to live in Australia' was used incorrectly in the 2007 publication. The correct label 'Type of visa on arrival to live in Australia' has been used in the 2010 publication. This data item has not changed, only the label used.

**17** It is impracticable to obtain information relating to labour force status of people before migration according to the strict definitions used in the monthly LFS. It is for this reason that 'Has had a job since arriving in Australia' and 'Has not had a job since arriving in Australia' are used to describe previous labour force status, while 'Employed', 'Unemployed' and 'Not in the labour force' are used to describe labour force status as at November 2010.

### COMPARABILITY WITH OTHER ABS SURVEYS

**18** Estimates from the Characteristics of Recent Migrants Survey may differ from the estimates produced from other ABS collections for several reasons. The Characteristics of Recent Migrants Survey is a sample survey and its results are subject to sampling error. Results may differ from other sample surveys, which are also subject to sampling error. Users should take account of the relative standard errors (RSEs) on estimates and those of other survey estimates where comparisons are made.

## EXPLANATORY NOTES *continued*

### COMPARABILITY WITH OTHER ABS SURVEYS *continued*

**19** Differences may also exist in the scope and/or coverage of the Characteristics of Recent Migrants Survey compared to other surveys. Differences in estimates may result from different reference periods reflecting seasonal variations, non-seasonal events that may have impacted on one period but not another, or because of underlying trends in the phenomena being measured.

**20** Finally, differences can occur as a result of using different collection methodologies. This is often evident in comparisons of similar data items reported from different ABS collections where, after taking account of definition and scope differences and sampling error, residual differences remain. These differences could be partly attributed to differing modes of the collections, such as whether data is collected by an interviewer or self-enumerated by the respondent, whether the data is collected from the person themselves or from a proxy respondent, and the level of experience of the interviewers. Differences may also result from the context in which questions are asked, i.e. where in the interview the questions are asked and the nature of preceding questions. The impacts on data of different collection methodologies are difficult to quantify.

### COMPARABILITY WITH NON-ABS SOURCES

**21** The Department of Immigration and Citizenship (DIAC) are the main holder of data containing personal information on migrants. Due to differences in collection objectives and definitions, data from the Characteristics of Recent Migrants Survey are not comparable with DIAC data.

### RELIABILITY OF THE ESTIMATES

**22** Estimates in this publication are subject to sampling and non-sampling errors:

- Sampling error is the difference between the published estimates, derived from a sample of persons, and the population parameter that would have been obtained if all persons in scope of the survey had been included. For more information on sampling error, refer to the Technical Note.
- Non-sampling error may occur in any collection, whether it is based on a sample or a full count such as a census. Sources of non-sampling error include non-response, errors in reporting by respondents or recording answers by interviewers, and errors in coding and processing data. Every effort was made to reduce the non-sampling error by careful design and testing of the questionnaire, training and supervision of interviewers, and editing and quality control procedures at all stages of data processing. Non sampling errors may be random or systematic in nature.

### NEXT SURVEY

**23** The ABS plans to conduct this survey again in November 2013.

### ACKNOWLEDGEMENT

**24** ABS publications draw extensively on information provided freely by individuals, businesses, governments and other organisations. Their continued cooperation is very much appreciated: without it, the wide range of statistics published by the ABS would not be available. Information received by the ABS is treated in strict confidence as required by the Census and Statistics Act 1905.

## TECHNICAL NOTE DATA QUALITY

### RELIABILITY OF ESTIMATES

**1** Since the estimates in this publication are based on information obtained from occupants of a sample of dwellings, they are subject to sampling error. That is, they may differ from those that would have been produced if all dwellings had been enumerated in the survey. One measure of the likely difference is given by the standard error (SE), which indicates the extent to which an estimate might have varied by chance because only a sample of dwellings was included. There are about two chances in three (67%) that a sample estimate will differ by less than one SE from the population parameter that would have been obtained if all dwellings had been enumerated, and about 19 chances in 20 (95%) that the difference will be less than two SEs.

**2** Another measure of the likely difference is the relative standard error (RSE), which is obtained by expressing the SE as a percentage of the estimate:

$$RSE\% = \left( \frac{SE}{estimate} \right) \times 100$$

**3** Space does not allow for the separate indication of the SEs and RSEs of all the estimates in this publication. However, RSEs were calculated for each separate estimate and are available to download free-of-charge as Excel spreadsheets from the ABS website <www.abs.gov.au> as an attachment to this publication. The Jackknife method of variance estimation is used to calculate SEs, which involves the calculation of 30 replicate estimates based on 30 different sub samples of the original sample. The variability of estimates obtained from these sub samples is used to estimate the sample variability surrounding the main estimate.

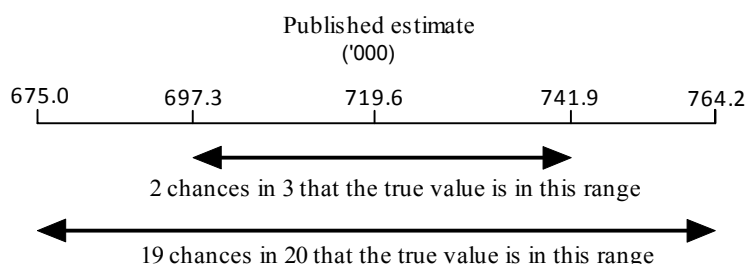
**4** In the tables in this publication, only estimates (counts or proportions) with RSEs less than 25% are considered sufficiently reliable for most purposes. However, estimates with larger RSEs have been included and are preceded by an asterisk (e.g. \*3.4) to indicate that they are subject to high SEs relative to their estimate and should be used with caution. Estimates with RSEs greater than 50% are preceded by a double asterisk (e.g. \*\*2.1) to indicate that they are considered too unreliable for general use.

### CALCULATING STANDARD ERRORS FOR POPULATION ESTIMATES

**5** Standard errors can be calculated using the estimates (count or proportions) and their corresponding RSEs. For example, Table 1 shows the estimated number of persons who were recent migrants as at November 2010 is 719,600. The RSE table for Table 1, with the RSEs corresponding to the estimates in Table 1, is included at the end of these Technical Notes. This shows the RSE for the estimate is 3.1%. The SE is:

$$\begin{aligned} & SE \text{ of estimate} \\ &= \left( \frac{RSE}{100} \right) \times estimate \\ &= 0.031 \times 719,600 \\ &= 22,300 \text{ (rounded to the nearest hundred)} \end{aligned}$$

**6** Therefore there are about two chances in three that the population count that would have been obtained if all dwellings had been enumerated in the survey would fall in the range 697,300 to 741,900 and about 19 chances in 20 that the population count would fall within the range 675,000 to 764,200. This example is illustrated below:



CALCULATING STANDARD  
ERRORS FOR DIFFERENCES  
OF ESTIMATES

**7** The difference between two survey estimates (numbers or proportions) is also subject to sampling error. The sampling error of the difference between two estimates depends on their SEs and the relationship (correlation) between them. An approximate SE of the difference between two estimates (x-y) may be calculated by the formula:

$$SE(x-y) = \sqrt{[SE(x)]^2 + [SE(y)]^2}$$

**8** While this formula will only be exact for differences between separate and uncorrelated (unrelated) characteristics of sub-populations it is expected to provide a good approximation for all differences likely to be of interest in this publication.

SIGNIFICANCE TESTING

**9** The statistical significance test for any of the comparisons between estimates was performed to determine whether it is likely that there is a difference between the corresponding population characteristics. The standard error of the difference between two corresponding estimates (x and y) can be calculated using the formula in paragraph 7. This standard error is then used to calculate the following test statistic:

$$\left( \frac{x-y}{SE(x-y)} \right)$$

**10** If the value of this test statistic is greater than 1.96 then there is good evidence of a real difference in the two populations with respect to that characteristic. This statistics corresponds to the 95% confidence interval. Otherwise, it cannot be stated with confidence that there is a real difference between the populations.

RELATIVE STANDARD ERROR

**11** Relative Standard Errors for Table 1 are included below. However, RSEs for all tables are available free-of-charge on the ABS website <[www.abs.gov.au](http://www.abs.gov.au)>, released in spreadsheet format as an attachment to this publication.

## TECHNICAL NOTE DATA QUALITY *continued*

RELATIVE STANDARD ERROR  
*continued*

TABLE 1 RSES:ALL PERSONS AGED 15 YEARS AND OVER, Migration status as at November 2010 and 2007—By sex

	Males	Females	Persons	Proportion of all persons
	%	%	%	%
2010				
<b>BORN IN AUSTRALIA</b> <sup>(a)</sup>	0.5	0.6	0.5	0.5
<b>BORN OVERSEAS</b>	1.1	1.5	1.2	1.1
<b>Arrived before 2001</b>	1.3	1.6	1.3	1.2
<b>Arrived after 2000</b>	2.5	2.9	2.4	2.4
<b>Aged less than 15 years on arrival</b>	8.4	12.0	8.4	8.5
<b>Aged 15 years and over on arrival</b>	2.7	2.9	2.5	2.5
Recent migrants and temporary residents	3.1	3.2	2.7	2.7
Recent migrants	3.4	3.9	3.1	3.1
Australian citizen	5.2	5.8	4.7	4.7
Permanent	5.1	4.8	4.1	4.1
Skilled	6.6	7.6	6.0	6.0
Family	9.7	7.6	6.7	6.7
Humanitarian	27.0	23.9	21.7	21.7
Other/n.f.d.	21.3	19.0	14.2	14.2
Temporary residents	4.8	5.2	4.5	4.5
Student	7.5	8.9	7.3	7.3
Other/n.f.d.	6.5	7.6	6.1	6.1
Status not determined	26.9	28.2	17.5	17.6
Australian/New Zealand citizen before arrival or currently holds New Zealand citizenship	8.6	7.8	7.0	7.0
Born in New Zealand	10.6	8.9	8.7	8.7
Not born in New Zealand	13.6	16.1	12.2	12.1
Planning to stay less than 12 months	31.0	35.0	25.8	25.7
<b>TOTAL</b>	<b>0.2</b>	<b>0.3</b>	<b>0.2</b>	—
2007				
<b>BORN IN AUSTRALIA</b> <sup>(a)</sup>	0.5	0.5	0.4	0.4
<b>BORN OVERSEAS</b>	1.4	1.3	1.2	1.2
<b>Arrived before 1998</b>	1.2	1.5	1.2	1.2
<b>Arrived after 1997</b>	3.3	2.8	2.7	2.7
<b>Aged less than 15 years on arrival</b>	12.3	11.3	9.0	9.0
<b>Aged 15 years and over on arrival</b>	3.1	2.8	2.6	2.6
Recent migrants and temporary residents	3.7	2.9	2.7	2.7
Recent migrants	4.1	3.5	3.3	3.3
Australian citizen	6.3	4.2	4.2	4.2
Permanent	4.4	4.8	3.9	3.9
Skilled	7.5	7.4	6.6	6.6
Family	7.7	8.5	6.5	6.5
Humanitarian	22.7	29.2	21.8	21.8
Other/n.f.d.	31.8	29.8	20.7	20.7
Temporary residents	7.2	7.3	6.5	6.5
Student	11.1	11.5	10.2	10.2
Other/n.f.d.	7.2	7.7	5.5	5.5
Status not determined	58.9	49.8	51.2	51.2
Australian/New Zealand citizen before arrival, currently holds New Zealand citizenship or born in New Zealand	7.7	7.8	7.3	7.3
Born in New Zealand	8.9	7.7	7.4	7.4
Not born in New Zealand	13.2	17.1	13.9	13.9
Planning to stay less than 12 months	36.0	28.9	25.5	25.5
<b>TOTAL</b>	<b>0.2</b>	<b>0.3</b>	<b>0.3</b>	<b>0.3</b>

— nil or rounded to zero (including null cells)

(a) Includes External Territories.

## GLOSSARY

<b>Australian citizen</b>	Being an Australian citizen formalises a person's membership of the Australian community. It entitles a person to live permanently in Australia, hold an Australian passport and do such things as vote to elect Australia's governments, stand for parliament, work in the Public Service and serve in the armed forces. A person may acquire Australian citizenship in a number of ways, for example, by birth, adoption, descent, resumption or grant of Australian citizenship (naturalisation). Migrants no longer require a visa once citizenship is granted.
<b>Australian Standard Classification of Education (ASCED)</b>	The ASCED is a national standard classification which includes all sectors of the Australian education system: that is, schools, vocational education and training, and higher education. From 2001 ASCED replaced a number of classifications used in administrative and statistical systems, including the Australian Bureau of Statistics Classifications of Qualifications (ABSCQ). The ASCED comprises two classifications: Level of Education and Field of Education. See <i>Australian Standard Classification of Education (ASCED), 2001</i> (cat. no. 1272.0).
<b>Bachelor degree or higher</b>	Includes Bachelor degree, Graduate diploma, Graduate certificate, and Postgraduate degree.
<b>Balance of state/territory</b>	Comprises the balance of Australia not included in Capital city.
<b>Capital city</b>	Comprises the Australian Capital Territory, the Major Statistical Regions of Sydney, Melbourne, Brisbane, Adelaide and Perth, and the Statistical Divisions of Greater Hobart and Darwin, as defined in the <i>Australian Standard Geographical Classification (ASGC), July 2010</i> (cat. no. 1216.0).
<b>Certificate</b>	Includes Certificate I/II/III/IV and Certificate not further defined.
<b>Country of birth</b>	Country of birth has been classified according to the <i>Standard Australian Classification of Countries (SACC), Second Edition, 2008</i> (cat. no. 1269.0).
<b>Employed</b>	Persons who, during the reference week: <ul style="list-style-type: none"> <li>■ worked for one hour or more for pay, profit, commission or payment in kind in a job, business or farm (comprising employees, employers and own account workers); or</li> <li>■ worked for one hour or more without pay in a family business or on a farm (i.e. contributing family workers); or</li> <li>■ were employees who had a job but were not at work and were: <ul style="list-style-type: none"> <li>■ away from work for less than four weeks up to the end of the reference week; or</li> <li>■ away from work for more than four weeks up to the end of the reference week and received pay for some or all of the four weeks up to the end of the reference week; or</li> </ul> </li> <li>or</li> <li>■ away from work as a standard work or shift arrangement; or</li> <li>■ on strike or locked out; or</li> <li>■ on workers' compensation and expected to return to their job; or</li> <li>■ were employers or own account workers who had a job, business or farm, but were not at work.</li> </ul>
<b>Employed full time</b>	Employed persons who usually worked 35 hours or more a week (in all jobs) and those who, although usually working less than 35 hours a week, worked 35 hours or more during the reference week.
<b>Employed part time</b>	Employed persons who usually worked less than 35 hours or more a week (in all jobs) and either did so during the reference week, or were not at work in the reference week.
<b>Had a job since arrival</b>	Includes persons who currently have a job or who had a job at some time since their arrival.
<b>Labour force</b>	Persons who were in the categories 'employed' or 'unemployed' as defined.
<b>Labour force participation rate</b>	For any group, the labour force expressed as a percentage of all persons aged 15 years and over in the same group.



## GLOSSARY *continued*

<b>Level of highest non-school qualification</b>	<p>Level of highest non-school qualification identifies the highest qualification a person has attained in any area of study. It is not a measurement of the relative importance of different fields of study but a ranking of qualifications and other educational attainments regardless of the particular area of study or the type of institution in which the study was undertaken.</p> <p>It is categorised according to the <i>Australian Standard Classification of Education (ASCED), 2001</i> (cat. no. 1272.0) Level of Education classification.</p>
<b>Main applicant</b>	<p>The 'main applicant' is generally the person whose skills or proposed activities in Australia are assessed by the Department of Immigration and Citizenship (DIAC) as part of their visa application. They will usually have been specifically identified on the application form as the 'main applicant'.</p>
<b>Main English-speaking countries</b>	<p>The list of main English-speaking countries (MESCC) provided here is not an attempt to classify countries on the basis of whether or not English is the predominant or official language of each country. It is a list of the main countries from which Australia receives, or has received, significant numbers of overseas settlers who are likely to speak English. These countries comprise the United Kingdom, the Republic of Ireland, New Zealand, Canada, South Africa, and the United States of America. It is important to note that being from a non main English-speaking country does not imply a lack of proficiency in English.</p>
<b>Main field of non-school qualification</b>	<p>Main field of non-school qualification is defined as the subject matter of the qualification. It is categorised according to the <i>Australian Standard Classification of Education (ASCED), 2001</i> (cat. no. 1272.0) Field of Education classification.</p>
<b>Non-school qualification</b>	<p>Non-school qualifications are awarded for educational attainments other than those of pre-primary, primary or secondary education. They include qualifications at the Postgraduate Degree level, Master Degree level, Graduate Diploma and Graduate Certificate level, Bachelor Degree level, Advanced Diploma and Diploma level, and Certificates I, II, III and IV levels. Non-school qualifications may be obtained concurrently with school qualifications.</p>
<b>Not in the labour force</b>	<p>Persons who were not in the categories 'employed' or 'unemployed' as defined.</p>
<b>Occupation</b>	<p>From 2006, occupation is classified according to the <i>Australian and New Zealand Standard Classification of Occupations (ANZSCO), First Edition, 2006</i> (cat. no. 1220.0).</p>
<b>Other applicant</b>	<p>A person whose visa was granted on the basis of being the family member (e.g. spouse, dependent child) of a person who qualified for a visa. They will have been identified on the visa application as an 'other' or secondary applicant with the person who met the visa criteria being specifically identified on the visa application as the 'main applicant'.</p>
<b>Permanent visa</b>	<p>The permission or authority granted by Australia for foreign nationals to live in Australia permanently.</p>
<b>Recent migrant</b>	<p>A person who was born overseas, who arrived in Australia after 2000, was aged 15 years or over on arrival, was not an Australian citizen or New Zealand citizen on arrival, does not currently hold New Zealand citizenship, and has permanent Australian resident status.</p>
<b>Reference week</b>	<p>The week preceding the week in which the interview was conducted.</p>
<b>Temporary resident</b>	<p>A person who was born overseas, who arrived in Australia after 2000, was aged 15 years or over on arrival, was not an Australian citizen or New Zealand citizen on arrival, does not currently hold New Zealand citizenship, and has a temporary visa.</p>
<b>Temporary visa</b>	<p>The permission or authority granted by Australia for foreign national to travel to Australia and stay up to a specified period of time. Temporary entrants for this survey include:</p> <ul style="list-style-type: none"><li>■ tourists</li><li>■ students</li><li>■ business people</li></ul>

## GLOSSARY *continued*

**Temporary visa *continued***

- people with specialist skills, such as managers, academics and medical practitioners
- people who make a social or cultural contribution to the community, such as entertainers, media and film staff, sports people, religious workers, visiting academics and public lecturers
- people who contribute to the development of international relations, such as participants in exchange programs and working holiday makers.

**Type of visa as at November 2010**

The visa the respondent held at the time of interview, that allowed them to stay in Australia. Categories for type of visa as at November 2010 are:

- Australian citizen - Persons who arrived to live in Australia on a permanent or temporary visa and have since obtained Australian citizenship.
- Permanent Skilled - Skilled migrants are selected on the basis of their age, skills and their ability to quickly make a contribution to the Australian economy. Includes Independent, Australian sponsored, Employer/State sponsored and Business skills visas.
- Permanent Family - Includes partner, child and parent visas.
- Permanent Humanitarian - Includes humanitarian and refugee visas.
- Permanent Other/n.f.d. - Includes all other permanent visa categories or where the type of permanent visa could not be determined.
- Temporary Student - Temporary student visas are granted to people studying or seeking study, training or skills development in Australia and planning to stay in Australia for 12 months or more.
- Temporary Other/n.f.d. - Includes tourists, working holiday makers and visitors planning to stay in Australia for 12 months or more or where the type of temporary visa could not be determined.

**Type of visa on arrival to live in Australia**

The visa the respondent held when they first arrived in Australia to live that allowed them to come to Australia. Categories for type of visa on arrival to live in Australia are as for 'Type of visa as at November 2010'.

**Unemployed**

Persons aged 15 years and over who were not employed during the reference week, and;

- had actively looked for full-time or part-time work at any time in the four weeks up to the end of the reference week and were available for work in the reference week; or
- were waiting to start a new job within four weeks from the end of the reference week and could have started in the reference week if the job had been available then.

**Unemployment rate**

For any group, the number of unemployed persons expressed as a percentage of the labour force in the same group.



## FOR MORE INFORMATION . . .

*INTERNET*      **www.abs.gov.au** the ABS website is the best place for data from our publications and information about the ABS.

### INFORMATION AND REFERRAL SERVICE

Our consultants can help you access the full range of information published by the ABS that is available free of charge from our website. Information tailored to your needs can also be requested as a 'user pays' service. Specialists are on hand to help you with analytical or methodological advice.

*PHONE*                      1300 135 070

*EMAIL*                      [client.services@abs.gov.au](mailto:client.services@abs.gov.au)

*FAX*                              1300 135 211

*POST*                            Client Services, ABS, GPO Box 796, Sydney NSW 2001

## FREE ACCESS TO STATISTICS

All statistics on the ABS website can be downloaded free of charge.

*WEB ADDRESS*      [www.abs.gov.au](http://www.abs.gov.au)